

AG ART

WEAR

*Organised by Rural Youth Agfest
Committee*



Conditions of Entry

1. All persons intending to enter the Ag Artwear Competition are to complete an official entry form to be sent to Rural Youth Agfest Office, PO Box 322, Launceston, 7250 by Friday 23rd April, 2010. The Ag Artwear Coordinator will contact you to make arrangements to bring your outfit to the field days. Late entries may only be accepted by arrangement with the Ag Artwear Coordinator
2. There are three sections:
 - Secondary 1 - Grades 7-10
 - Secondary 2 - Grades 11 & 12
 - Tertiary – Polytechnic or University

Each creation may be only entered in one section and not have competed in other Ag Art Wear® Field Days Competitions.

3. Winners of each section will receive gift vouchers as follows:
 - 1st Prize – Gift Voucher to the value of \$150
 - 2nd Prize – Gift Voucher to the value of \$50
 - 3rd Prize – Gift Voucher to the value of \$25

Entrants in the Tasmanian competition will be invited to enter their garment at the National Competition held at the Elmore Field Days on 5th- 7th October, 2010. Entries into the Elmore Competition will be at your own cost if you choose to attend.

4. Garments cannot be entered again for a second year.
5. The person named on the entry form must have created the garment. One entry per applicant. No groups permitted, one person per garment.

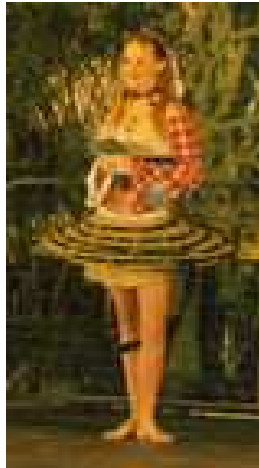
When promoting this event, the Agfest Committee holds the exclusive rights for all of the advertising and photos relevant to the Ag Art Wear® Competition.

6. The creation is to be made from material of an agricultural nature as produced or used on the farm, however buttons, zips and such items may be used without penalty. All Garments need to be made from items found on around the farm. **Outfits will be disqualified if items are brought from hardware stores. It needs to have been used on the farm.**

7. The creation need not be practical, but rather entertaining.
8. The creation must be durable enough to be worn at least once and displayed during Agfest. It will need to be modelled by the designer or his/her nominated person for judging. Each outfit may comprise more than one item.
9. Entrants will be required to speak about their garments and will be on stage for about 2 minutes or more to allow time for judges to view garments.
- 10. Judging will take place prior to the Ag Artwear Fashion Parade which will be held at 12 noon on Saturday 8th May in the Fashion Parade pavilion at Agfest.**
11. Should the garment need any accessories such as body suits/tights etc they should be provided by the entrant. The garment must allow free body movement and not scratch, injure or be a hindrance to the wearer. It must be of a weight to be comfortably worn and carried.
12. Judging will be based on the imagination of the creator, appearance and use of agricultural products found on the farm.
13. Judging is on a visual inspection. Judges do not examine the finish or making of the garment. Use of non-agricultural products is allowed however this will be taken into consideration when judging. Points will not be deducted for using items like commercial spray rather than tail-paint.
14. The judge's decision will be final and no correspondence will be entered into. Organisers will not be responsible for any damage or loss of garment.
15. Entrants will be issued with a double pass entry into Agfest for Saturday 8th May, 2010.
16. Entrants will be issued with a certificate of participation on the day.
17. All entries need to be lodged by April 23rd, 2010.
18. The person named on the entry form may only enter the competition age group provided for them once during 2010.

19. The Committee reserves the right to amend the Conditions of Entry if deemed necessary prior to the event. Notification will be given as soon as possible following the amendment.

Previous Entrants



Any queries contact:

Anna McMahon, Ag Art Wear Coordinator

Email: admin@agfest.com.au

Mobile: 0409 934 643