

2026 OFFICIAL GUIDE



PROUDLY PRESENTED BY

RURAL  YOUTH

AGFEST

TASMANIA'S PREMIER FIELD DAYS

For all Generations

RURAL  YOUTH

AGFEST

 TASMANIAN
country
THE VOICE OF RURAL TASMANIA

OFFICIAL GUIDE CONTENTS

Chair’s Message	3	Site Map	34
Governor’s Message	3	Craft Pavilions	38
President’s Message	4	Craft Market	40
Official Charity	5	Exhibitors by Category	42
Agfest Highlights	8	Quercus Taste	51
Features Trail	10	Committee	56
Competitions	19	Visitor Information	57
Tas Petroleum Central Arena	24	Traffic Information	58
Equine and Livestock Expo	26	Sponsors	60



SITE INFORMATION	
RURAL YOUTH TASMANIA	
CORNER MAIN STREET & NINTH AVENUE	SITE M88

VISIT US! RURAL YOUTH

Come and see us at the Rural Youth Feature Tent at site M88 to learn more about what Rural Youth Organisation of Tasmania has to offer. Rural Youth provides opportunities for young people aged 15–30 to get involved, meet new people and take part in a

range of activities — and you don’t need a rural background to join.

Discover the eleven clubs located across Tasmania, find out more about our international exchange program and learn about opportunities such

as the Woolworths Tasmanian Young Farmer of the Year Competition.

While you’re there, check out the range of Rural Youth merchandise available in the tent this year!

WELCOME TO AGFEST 2026

Welcome to Agfest 2026. Each year, this event brings together industry, innovation, and community, and that's something we're incredibly proud of. What started as just an idea has now become one of the state's biggest events and also a significant contributor to the Tasmanian economy.

This year's event is shaping up to be another strong one, with some exciting changes across the site, new features to explore, and plenty of familiar favourites returning. Whether you're here to talk machinery, check out the latest technology, support local businesses, or simply enjoy the day out, there's something here for everyone. So be sure to have a look through this guide and see all that's on offer.

Agfest wouldn't happen without the huge effort from our incredible Rural

Youth Volunteers, aged between 15 to 30 supported by a small team of staff. Their dedication is what makes this event possible. Agfest also provides opportunities for our volunteers to gain strong leadership, teamwork, communication, and organisational skills. That's on top of the various licenses and qualifications we offer throughout the year as well, not to mention the lifelong friends that are made along the way.

A special thank you goes out to our Sponsors, Supporters, Media partners and exhibitors. Your continued commitment and contribution to the event is very much appreciated and never forgotten.

On behalf of the Agfest committee, we hope you enjoy your time here and make the most of everything the event has to offer.



Jesse Macdonald
2026 Agfest Chair

GOVERNOR'S MESSAGE

I am delighted to write this Patron's message in support of Agfest Field Days 2026, one of Australia's premier agricultural field days and a highlight of Tasmania's rural calendar.

Each year Agfest brings together farmers, producers, families and visitors from across our State and beyond. It is a celebration of the strength and diversity of Tasmanian agriculture. More than 640 exhibitors bring together the latest in agricultural machinery and technology. Livestock, boating, camping, gardening, and rural lifestyle products are on display, so there is something for everyone.

All proceeds from Agfest ticket sales go towards supporting Rural Youth Tasmania. These are the dedicated

young members who volunteer, learn and hone new skills, including hands on machinery operation, event planning and exhibitor management. Generous sponsors also contribute each year to this most important fundraising activity for Rural Youth Tasmania.

Whether you come to explore new ideas, connect with industry or enjoy a great day out in the paddock, Agfest is an experience like no other. I look forward to joining you there at Quercus Park.



Her Excellency The Honourable
Barbara Baker AC
Governor Of Tasmania

TASMANIA'S PREMIER FIELD DAYS

THANK YOU FOR COMING ALONG TO AGFEST 2026!

Agfest is proudly delivered by the Rural Youth Organisation of Tasmania, a volunteer-run organisation for people aged fifteen to thirty. Rural Youth's vision is to connect, develop and celebrate young Tasmanians.

We have 11 clubs throughout the state: North Motton, Devonport, Hagley, Westmorland, Tamar, Oatlands, Central Highlands, Brighton, Kingborough Huon, Sorell and Tasman. Each club holds regular meetings and social events, creating opportunities for members to connect both locally and with others from across Tasmania.

Rural Youth members have access to many opportunities including an annual training subsidy, free or discounted training, and a range of social activities such as the State Ball, games nights and debate. Members receive free entry to the Woolworths Tasmanian Young Farmer Competition and Agfest. They can also nominate for Rural Youth awards and scholarships and apply for overseas exchanges. This year members are travelling on

exchange to Canada, New Zealand, Scotland and Northern Ireland. Rural Youth offers young Tasmanians opportunities to develop personally and professionally while having a great time along the way.

Agfest is coordinated by a volunteer committee made up of Rural Youth members. Managing an event of this scale is no small task and highlights the commitment of our members. In the lead-up to this year's event, some of our members have undertaken leadership, first aid and various machinery trainings, skills critical for the running of Agfest that will also serve our members into the future.

During the event you'll see Rural Youth volunteers in yellow and orange hi-vis vests throughout Quercus Park, working to ensure visitors have a positive experience. We hope you enjoy your time at Agfest. Explore the features and displays, visit our exhibitors avenue by avenue, and stop by to say hello to our members around the site or in the Rural Youth Feature

Tent at M88. Thank you for visiting Agfest and supporting the Rural Youth Organisation of Tasmania.



Amber Bramich

Amber Bramich
2026 Rural Youth State President



RURAL YOUTH AGFEST 7-9 MAY 2026

WALK THROUGH MUD, TOGETHER.

Rural Alive and Well work closely with rural and regional communities to build mental health and resilience. In an effort to support their work, Rural youth Tasmania asks you to wear your Gumboots on Friday May 8th!

Mud represents the tough seasons, the heavy days, long hours, and hard conversations. But no one has to walk it alone. When we pull on our gumboots, we're saying that when things get messy, we do it together.

WIN HELICOPTER FLIGHTS, VOUCHERS + MORE!

GUMBOOT PARADE RAISING MENTAL HEALTH AWARENESS

GUMBOOT DAY

Gumboot Parade
Tas Petroleum Central Arena
12pm Friday May 8th

AGFEST OFFICIAL CHARITY



Rural Alive & Well (RAW) is a Tasmanian not-for-profit providing free, face-to-face support to people living and working in rural and remote communities across the state. Our reach extends across primary industries including agriculture, seafood, and transport. Rural life brings both opportunity and challenge, and we recognise that navigating seasonal pressures, financial strain, workforce shortages and personal stress can be tough. Our team is passionate about building thriving, sustainable communities, because strong communities start with healthy people.



As the Official Charity and Rural Youth Health & Wellbeing Partner of Agfest, the past three years have significantly strengthened our ability to support rural Tasmanians, particularly the next generation of leaders in agriculture and primary industries.

In the 2024/25 financial year, RAW worked one-on-one with 697 individuals across Tasmania, delivering tailored early-intervention suicide prevention support wherever people live and work. In addition, our team engaged with tens of thousands of community members through proactive visits to farms,

worksites, events and regional towns. Among them were many young people navigating challenges around family pressures, finances, education, health and wellbeing.

Young people are central to the future of Tasmania's agricultural and primary industry sectors. To

SITE INFORMATION

RURAL ALIVE & WELL (RAW)

CORNER MAIN STREET & NINTH AVENUE

SITE M88

ensure these industries continue to thrive for generations to come, we must invest in mental health awareness, build resilience, and equip individuals with the tools to manage situational stress before it becomes overwhelming.



NEED HELP?

If you or someone you know is navigating greater life challenges, please call on **1800 729 827** or submit a call back request online at: ruralaliveandwell.com.au/callbackrequest



TAX TIME DEALS

ON NOW

*Sale valid until 30/06/2026



Visit site: **733-735**

SAVE BIG

this tax time with CFMOTO

WELCOME TO AGFEST 2026

WELCOME TO AGFEST 2026 — WHERE THE VERY BEST IN AGRICULTURAL INNOVATION AND LIFESTYLE SOLUTIONS COME TOGETHER IN A DYNAMIC, WORLD-CLASS OUTDOOR SHOWCASE.

This year, we are proud to unveil an enhanced site layout designed to deliver a seamless and engaging experience for every visitor.

NORTH SIDE OF THE SITE

Entering through our new North Gate, visitors will step directly into our renowned **Agricultural Hub**—a vibrant centrepiece featuring the latest in machinery, technology, and irrigation solutions. This precinct highlights the innovation and ingenuity driving modern agriculture forward.

Continuing through the northern sector, patrons will discover everything needed to equip and enhance their next vehicle, from accessories to specialist services. Be sure to visit the ADF display to learn more about the initiatives and opportunities within the Australian Defence Force.

SOUTH SIDE OF THE SITE

The South Side presents a diverse showcase catering to industry professionals, families, and lifestyle enthusiasts alike. Explore our expansive Caravan and Outdoor Leisure section, ideal for those inspired by adventure and the open road.

The Building and Housing Hub offers expert solutions, products, and services to support upcoming construction and renovation projects. Visitors can also connect with key Government Services, alongside a broad range of lifestyle exhibitors providing products and resources designed to enhance both work and home life.

JOIN US FOR AN UNFORGETTABLE EXPERIENCE AS AGFEST CONTINUES TO EVOLVE, BRINGING THE BEST OF TASMANIA'S AGRICULTURAL AND LIFESTYLE SECTORS TO LIFE!

EASTERN SIDE OF SITE

The eastern side of the site is home to our equine exhibitors and the newly constructed Dairy Tas Shed. This area also showcases a diverse range of lifestyle products, alongside our horticultural exhibitors, offering visitors the opportunity to explore innovations, equipment, and expertise from across these important sectors.

Join us at Agfest 2026 for an exceptional event experience as we continue to evolve—celebrating and championing the very best of Tasmania's agricultural excellence and vibrant lifestyle sectors.



WR Willowdale Rural

Bringing Integrity, Efficiency & Safety to Livestock Handling

Cattle • Sheep • Horse • Feeders
Agribelt • Rubber Matting

SEMI-PERMANENT & PERMANENT YARDS

SITE NO 454 & 456 FOURTH AVENUE



LEARNING TRAIL

The learning trail provides an interactive experience for children and students alike (and potentially keen adults) to engage with exhibitors, primarily focusing on educating them about agriculture and related industries.

Kids will be gifted with a passport and a map to guide them around site, visiting exhibitors that have selected to take part in the trail and completing each activity and/or demonstration offered by the exhibitor and receiving a stamp for the passport.

It's a valuable learning opportunity that highlights some of the key aspects of agriculture and is a fun way to venture around the sites.

Please collect your passport from any of the three entrance gates or at site office on Main Street.

Hydro Oasis

Potting up station



Flinn Design Pty Ltd

Interactive sheep yard design

Primary Industries Education

Foundation Australia - Learning about food and fibre production

ReThink Waste Tasmania

Waste sorting game

SelfHelp Workplace

Interactive pallet construction activity

Van Diemens Land Creamery

Sample product and learn about food manufacturing

Vision Plus

Label and learn about the DJI Agras T50 agricultural drone and how it supports modern farming

Little Things Farm Tasmania

An interactive activity learning about rotational grazing

University of Tasmania

Choose your own adventure! Complete one of the many activities on offer within the UTAS tent

Rex James Stock feed Pty Ltd

An interactive walk through the process of grain from harvest to stockfeed delivered to farm

PARTNER WITH AGFEST – GROW YOUR BRAND WITH US DO YOU WANT TO BE A SPONSOR?

Agfest offers outstanding opportunities to create meaningful, mutually beneficial partnerships through sponsorship of Agfest, Young Farmer of the Year and Rural Youth Tasmania.

As an Agfest Sponsor, you'll enjoy a wide range of benefits, including guaranteed and preferred site locations, valuable promotional exposure and direct access to thousands of engaged patrons. It's a powerful platform to showcase your brand, strengthen customer relationships and connect with rural and regional communities.

We understand that every business is different. That's why our sponsorship arrangements can be tailored to deliver relevant, targeted benefits that align with your marketing goals and maximise your return on investment.

Let us help you increase your exposure and reach your customers.

Talk to us about how we can work together to create a win-win partnership.

Sponsorship@ruralityouth.com.au
0448 344 380

➔ E: SPONSORSHIP@RURALYOUTH.COM.AU 📞 P: 0448 344 380

FEATURES HIGHLIGHTS



BULLOCKS EASTERN END ARROWQUIP LIVESTOCK ARENA

Come on up to the Livestock Expo to watch Brian Fish put his impressive bullock team to the test. His demonstrations showcase bullocks in real working situations—pulling loads, manoeuvring with precision, and responding seamlessly to voice commands. Informative, engaging, and authentic, Brian's presentations offer a rare insight into an important part of rural heritage and working animal culture.



ANIMAL NURSERY SITE M101

Come along to our Animal Nursery and meet a delightful collection of cute, cuddly, and curious animals from the Little Farm of Cuddles. From soft-furred favourites to gentle, wide-eyed newcomers, this nursery offers a chance to get up close and learn about a variety of friendly animals in a calm and welcoming setting. Perfect for children and adults alike, the Animal Nursery is a place to slow down, smile, and enjoy the simple joys of meeting some truly lovable creatures.

**SITE
822**

TKO TRADIE CHALLENGE

**BE SURE TO SEE THE FINAL
PRODUCTS JUDGED ON
SATURDAY AT 1PM!**



REV IT UP RACING SITE N47

Rev It Up Racing delivers high-octane fun for all ages with exciting racing simulators and interactive challenges that put you in the driver's seat! From heart-pounding laps on realistic virtual tracks to friendly pit-stop showdowns, it's a thrilling, laughter-filled experience that brings the joy of racing to life. Experience the rush, chase the fastest lap, and see who takes the checkered flag!



JOIN THEM AT THEIR BASKETBALL HOOP!

SITE 458

The JackJumpers will be joined by the Jewels at Agfest this year. The Jewels are Tasmania's newest professional sporting club, getting ready to launch in the Women's National Basketball League this year. The JackJumpers and the Jewels are bringing basketball fun and games to Agfest. Join them at their basketball hoop, and in the St Lukes Site. Win tickets to games, signed memorabilia, as well as free places to attend one of their basketball skills programs hosted around Tassie! Plenty of giveaways and your chance to shoot some hoops with their loveable mascot, Jack the Jumper.



DINKUM DINOSAURS

SITE 909

Get ready for laughs, roars, and dino-sized fun with Dinkum Dinosaurs!

Their high-energy, interactive shows are packed with silly antics, dancing dinosaurs, and plenty of audience participation.

From mischievous baby dinos to towering prehistoric stars, every show is a fast-paced mix of comedy, movement, and memorable moments that keep kids giggling and grown-ups grinning. A guaranteed crowd-pleaser for all!

DINKUM DINOSAURS TIMETABLE

10.00am	Puppet Show
11.30am	Turbo the Magic Dinosaur
1.00pm	Puppet Show
2.30pm	Turbo the Magic Dinosaur

FEATURES TRAIL



AGFEST
2026
7-9 MAY

AGFEST HIGHLIGHTS

BUSINESS + LIFESTYLE EXPO PAVILION

Step into the Business and Lifestyle Exhibition located in Pavilion E-F at Agfest 2026 - your hub to connect, get assistance with future planning and improve your business and wellbeing.

There is a diverse range of exhibitors offering valuable services and experts ready to chat about farm management software, sustainable services, professional hearing care, NDIS support, and a whole range of trusted guidance on insurance, loans, superannuation and financial assistance. Additionally, the Business and Lifestyle Exhibition will be showcasing quality Tasmanian-made products, thermal clothing and necessities for new and young families.



SITE INFORMATION

BUSINESS + LIFESTYLE EXPO

PAVILION E-F

AUDIKA HEARING CLINIC
F10

CARESUPER
F08

BAPTCARE NDIA PITC & MISSION AUS
F06

NATIONAL BREAST CANCER FOUNDATION
F04

WAVERLEY MILLS
F02

WALKWAY - WALKWAY - WALKWAY -

ONECARE
E10

NIAGARA MEDICAL THERAPY
F07

MCMF
F05

THERMAL THEORY
F03

ADOREU BABY AND KIDS
F01

MAXXIA
E06

KPMG
E04

AGWORLD
E02

WALKWAY - WALKWAY - WALKWAY -

TASWATER
E09

DEGREE C SOLAR
E07

FIRE DOOR

RECYCLE REWARDS
E03

WFI INSURANCE
E01

DELMADE
Shaping the Land

WHEN DOWNTIME ISN'T AN OPTION. DELMADE.

See us at Site N11 North Street

1800 335 623



UNIVERSITY OF TASMANIA PAVILION

Step into a world of ideas, innovation, and hands-on fun at the University of Tasmania Pavilion and HealthStop.

Grab your 'Ultimate Trail Card for Curious Minds' and discover how the University of Tasmania is tackling global challenges – right here in Tasmania.

Science & sustainability that inspire

Get climate curious, learn sustainable fishing, transform virtual terrains, pilot mini drones, and explore landscapes like never before. Big ideas can solve big challenges.

Tech that wows

Race robots, outsmart cyber threats, learn how to stay safe online, and peer through microscopes to discover hidden worlds. See how emerging tech is shaping work, play, and life.

Agriculture with a twist



From dirt to dessert, apples are packed with science! Explore flavours and best uses, test harvest readiness, and take on our spice challenge. Meet the insects that matter – pollinators, predators, and pests – up close.

Creativity unleashed

Experience art in our micro gallery, then roll up your sleeves to create timber structures and sculptural forms. Let imagination lead the way!

Health boosted

Discover advances in health and how you can be part of future medical breakthroughs. Then, head to HealthStop for a free blood pressure check, wellbeing tips, and fun for all ages – just a short walk from the Pavilion at sites N96 & 1135.



SITE INFORMATION

UNIVERSITY OF TASMANIA

PAVILION I-J

Enjoy a complimentary soda and chat with University staff, researchers, and students about how their work impacts Tasmania and beyond. After all that discovery, relax in our outdoor area. Join us at the eastern end of North Street and see how big ideas are shaping Tasmania's future.

Find out more at utas.edu.au/agfest

Let it Grow School Competition

Thursday 7 May, 11.30am

Cheer on local students as we reveal which schools grew the biggest carrot and uncovered the secrets of soil health. Coordinated by the Tasmanian Institute of Agriculture, the competition tests students' skills in vegetable growing and soil health.

HealthStop

Drop in for a free blood pressure check, health screening info, and tips to boost brain health. Kids will love testing sports skills, plastering a finger, and making hand cream. Find us at sites N96 & 1135.



UNIVERSITY of TASMANIA 

FIND OUT MORE AT
[WWW.UTAS.EDU.AU/AGFEST](https://www.utas.edu.au/agfest)
OR SCAN THE QR CODE.





FLINN DESIGN

A LIFETIME OF EXPERIENCE

WE SPECIALISE IN

- SHEEP YARDS
-
- SHEARING SHEDS
-
- SHEARING SHED RENOVATIONS
-
- RAM - TO - EWE
-
- CATTLE YARDS
-
- BEING AWESOME

WHAT WE DO

- DESIGN & CONSULT
-
- MANUFACTURE
-
- CONSTRUCTION
-
- DRINK BEER

Sheep Yards are Sexy!

“Watching a mob of sheep move through a well-designed set of yards is a beautiful sight. Being part of the flow, contributing to the draw and escape of the mob by applying and releasing pressure—whether by lifting your hat or leaning towards a passing mob—is truly a thing of beauty.

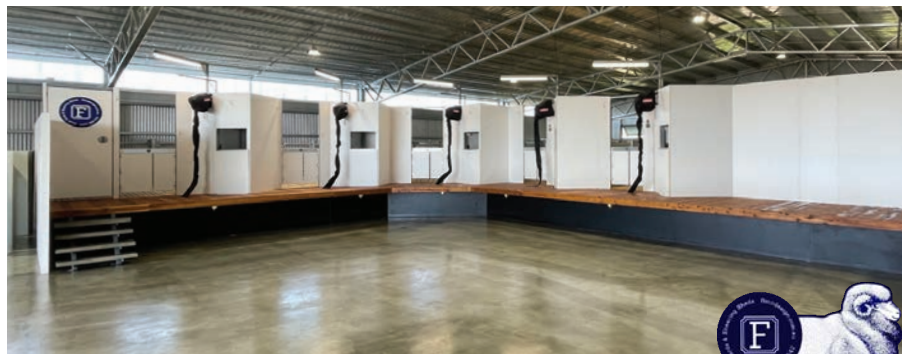
The ability to instinctively know where to stand, where to move next, and where the sheep truly want to go is akin to the instincts of the animals themselves.”
-Simon Flinn



Are Shearing Sheds Sexy Too?

“This critical piece of infrastructure bears the responsibility of removing the most environmentally friendly, natural fibre the world has ever known. Designing it doesn’t come from a book or a university degree—it comes from good old-fashioned stock knowledge. That’s the irony. The knowledge to design the future already exists. We do it every day.

And yeah, they’re proper sexy too.” -Simon Flinn



GET IN TOUCH
0437989542

✉ yards@flinndesign.com.au

🌐 www.flinndesign.com.au



CONSULTATION | DESIGN | MANUFACTURE | CONSTRUCTION

THE WHOLE DAMN THING

JOIN ABC RADIO AT SITE M92 MAIN ST

ABC Tasmania is a proud media partner of Agfest, and back for a jam-packed three days.

Make sure you swing by ABC Radio at M92 Main Street to meet some of your favourite presenters, catch our live broadcasts, and enjoy a range of fun, family-friendly activities. 936 ABC Hobart and ABC Northern Tasmania will be bringing you all the action live from the grounds of Quercus Park, keeping Tasmanians connected with what's happening across Agfest. On Friday, Mornings with Leon Compton will broadcast live from 8:30am-11:00am, followed by Afternoons with Joel Rheinberger live from 1:30pm. On Saturday, you'll have the chance to meet ABC Northern Tasmania Breakfast and Drive presenters, Kim Napier and



Evan Wallace, plus enjoy family-friendly activities, games, and competitions.

Join us at M92 Main Street for all the excitement. And if you can't be there in person, tune in to your local ABC Radio station or listen anywhere via ABC listen.

SITE INFORMATION	
ABC RADIO TASMANIA	
SITE M92	MAIN STREET



HERITAGE DISPLAY

Step back in time at the 2026 Agfest Heritage Display!

Discover an impressive collection of vintage machinery spanning a wide range of industries, each piece telling a story of innovation and craftsmanship from years gone by.

Experience history in action with live demonstrations running throughout the day—bringing these remarkable machines to life right before your eyes.

Don't miss your chance to explore the past, celebrate tradition, and see how far we've come!

SITE INFORMATION	SITE N57
HERITAGE DISPLAY	
WORKING DEMONSTRATIONS	

i NORTH STREET - BETWEEN 6TH & 7TH AVENUES



SITE INFORMATION

UNITED KENNEL CLUB

SITE N77

NORTH STREET

CANINE DISPLAY

QUERCUS PARK UNITED KENNEL CLUB

Dog lovers, this one's for you! The Quercus Park United Kennel Club Canine Display is packed with action, education, and plenty of wagging tails.

Step inside their purpose-built facility and discover a fascinating world of canine expertise—from

grooming and clipping to retrieval, tracking, and show skills. Be amazed by high-energy flying dog demonstrations and more.

With something for every dog enthusiast, this engaging and informative display is truly a must-see!



THURSDAY
Retrieving
Duck Herding
Dogs available for meet greet & photos.

FRIDAY
Duck Herding
Dogs available for meet greet & photos.

SATURDAY
Trick Dog
Duck Herding
Dogs available for meet greet & photos.

PETER BROCK MEMORIAL 4WD TRACK

Get ready for adrenaline-pumping action at the Peter Brock Memorial 4WD Track! A must-see destination for 4WD enthusiasts and families alike, this exciting arena delivers thrilling demonstrations that showcase power, precision, and performance.

Watch as expert drivers from the 4WD Tasmanian group and the Australian Defence Force push their vehicles to the limit—tackling challenging terrain and proving just what these machines are capable of.

Be sure to check out the daily timetable on-site and catch all the action at the corners of North Street between Fifth and Sixth Avenues!



4WD TRACK TIMETABLE

9.00	4WD Tas	12.20	4WD Tas
9.20	Toyota	12.40	Lunch Break
9.40	4WD Tas	1.00	4WD Tas
10.00	Defence Force	1.20	4WD Tas
10.20	4WD Tas	1.40	Defence Force
10.40	4WD Tas	2.00	4WD Tas
11.00	4WD Tas	2.20	Toyota
11.20	Toyota	2.40	4WD Tas
11.40	4WD Tas	3.00	4WD Tas
12.00	Defence Force		

SITE INFORMATION

PETER BROCK 4WD TRACK

BETWEEN 5TH + 6TH AVE

DON'T MISS



HIT THE ROAD TO ADVENTURE AT THE

AGFEST CARAVAN & CAMPING SHOW

SITE INFORMATION
CARAVAN & CAMPING SHOW
SOUTH STREET

YOUR ONE-STOP DESTINATION FOR ALL THINGS OUTDOOR ADVENTURE!

Ready to plan your next great getaway? Head down to South Street and discover the Agfest Caravan and Camping Show — your one-stop destination for all things outdoor adventure!

Explore the latest caravans and camping accessories from Tasmania’s leading dealers, and get inspired to hit the open road in comfort and style. Whether you’re a seasoned traveller or just starting to dream about your first big escape, you’ll find everything you need to make your holiday adventures unforgettable.

Come along, explore, and get ready to love the journey as much as the destination!

MAST BOAT SHOW

Tassie’s MAST Boat Show returns to Agfest 2026, located in Seventh Avenue between Main and South Streets.

Discover the very best of Tasmania’s boating industry, all in one vibrant marine precinct. Leading boat dealers and marine retailers will showcase an impressive range of new boats, outboards, fishing tackle and the latest marine equipment — everything you need for life on the water, conveniently in one place.

MAST will also be on hand with expert advice on boating safety and the essential equipment required for your on-water adventures.

While you’re there, sign up to the MAST E-Newsletter at Agfest for your chance to win in the random prize draws.

Make Seventh Avenue a must-visit and connect with Tasmania’s premium boat dealers and marine businesses at Agfest 2026.

SITE INFORMATION
MAST BOAT SHOW
FIND US AT 7TH AVENUE



i BETWEEN MAIN AND SOUTH STREET



HELICOPTER JOY FLIGHTS

BY UNIQUE CHARTERS

SITE INFORMATION

UNIQUE CHARTER FLIGHTS

SITE S04

See Agfest from a whole new perspective with a thrilling Helicopter Joy Flight, proudly operated by Unique Charters. Soar above the event site and take in spectacular bird's-eye views of Agfest and the stunning surrounding landscape.

**IT'S AN UNFORGETTABLE EXPERIENCE
THE WHOLE FAMILY WILL LOVE.**



HEAD TO SITE S04 IN SOUTH STREET TO RESERVE YOUR SEAT AND GET READY TO ENJOY AN INCREDIBLE RIDE ABOVE AGFEST 2026.

WIN THE LUCKY LOCKER COMPETITION

EACH DAY
WE WILL
BE HIDING

**3
KEYS**

1 OF THESE KEYS WILL
OPEN THE PADLOCK,
LOCATED IN OUR FEATURE
TENT ON THE CORNER OF



NINTH
AVENUE
& MAIN
STREET

HOW TO FIND THE KEYS

YOU WILL NEED TO FOLLOW THE **CLUES & HINTS** GIVEN OUT ACROSS OUR FACEBOOK AND INSTAGRAM PAGES THAT WILL LEAD YOU TO WHERE THE KEYS ARE HIDDEN.

WANT TO BE PART OF THE FUN? GET INVOLVED WITH AGFEST!

EXHIBIT AT AGFEST

As an Agfest exhibitor you can showcase your service to over 60,000 people. Sites vary in size and location, giving you lots of options to apply for.

Exhibitor applications for Agfest 2027 will be available on our website on the 1st September 2026 and close on the 15th October 2026. Applicants are then notified on 15th December 2026 regarding the status of their application.

Exhibiting prices will be available on our website on the 1st September 2026 and all applications to exhibit are made online at www.agfest.com.au.

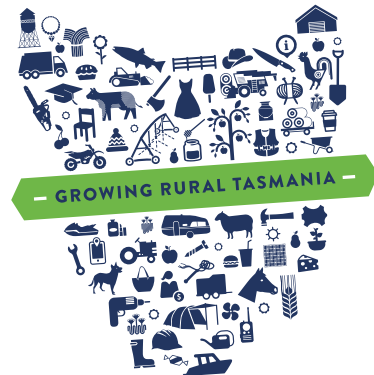
For more information please contact admin@agfest.com.au.

FUTURE DATES FOR YOUR CALENDAR

AGFEST
2027
6TH - 8TH MAY

AGFEST
2028
4TH - 6TH MAY

AGFEST
2029
3RD - 5TH MAY



TRACTORS, RIDE-ON MOWERS & IMPLEMENTS FOR HOBBY FARMS THROUGH TO LARGE SCALE FARMING OPERATIONS



CASE IH merchandise.
Mens, Womens & Kids
Clothing, Hats,
Jackets & Toys.



AUSTRALIAN OWNED & OPERATED

ttmi.com.au

LONGFORD
6-8 WELLINGTON ST
(03) 6391 2411

LATROBE
49 PERCIVAL ST
(03) 6426 4200

T&C's Apply, Select Pre-2026 plated models. Limited Floor Stock only. Offer Aends 30/6/2026



**Win One of Five
\$100 Gift Cards**

Visit the Woolworths Fresh Food Marquee at Site S49 (corner of South St and Fifth Ave) to scan the QR Code on-site for your chance to

**Win 1 of 5 \$100
Wish Gift Cards!**



**WIN 1 OF 10
RURAL YOUTH TASMANIA
2026/27 MEMBERSHIPS**

Entries drawn Monday 11 May 2026 and winners will be notified by email and results will be published on the Agfest website.

By entering this competition your details will be released to Rural Youth Tasmania.

**SCAN THE QR CODE
TO SEE MORE
COMPETITIONS!**



**VISIT US
AT SITE
N07
CNR FIRST & NORTH
AT AGFEST**



TasMac DEVONPORT | LAUNCESTON | HOBART | SMITHTON
AGRICULTURE | CONSTRUCTION | LIFESTYLE 1800 682 276 | TASMAC.COM.AU

Your local Kubota dealer.
Proudly Tasmanian.



Low-cost farm business loans

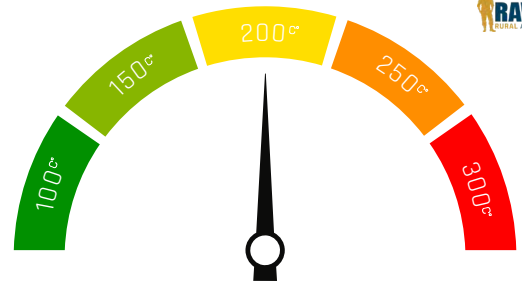
Improve cash flow to help manage through tough times

Check your eligibility
ric.gov.au/before-apply

T&Cs, eligibility & credit criteria apply.



Catch up with RIC at AgFest
TasFarmers Site 809 | 7-9 May 2026



It's okay for your temperature gauge to move up and down, but when you spend too much time between 250°C - 300°C, it's time to get in contact with RAW

📞 1800 729 827



RAW Conversations change lives

GET THE APP GET THE CAP

This Agfest, the caps are back! Subscribers to the **TasCountry App** can receive the free, limited-edition TC cap while stocks last. Get in quick! We have limited stock available each day.

- Download the **TasCountry App** from your app store
- Subscribe to receive notifications and keep up to date with rural news from across the state
- Show the App at our site on the corner of Main St & CWA Grove
- Get your cap on
- Have your photo taken with a chance to feature in next week's paper



These ran out the door last time - don't miss out on the best hat in the paddock this year!



SCOUTS TASMANIA CLIMBING & ABSEILING TOWER

Want to overcome your fear of heights? Love to climb or want to abseil?

Ready to challenge yourself and conquer new heights? The Scouts Tasmania Climbing & Abseiling Tower is calling all thrill-seekers, adventurers, and anyone keen to push their limits!

Take on the climbing wall and see just how high you can go—reach the top rail, then make your descent with expert guidance. Feeling brave? Step over the edge and experience the ultimate rush as you abseil down the tower, all while taking in spectacular views of Agfest.

Watch live training demonstrations as Scout Leaders showcase their skills, including mid-air rope changes and exciting rescue scenarios.

Whether you're climbing, abseiling, or simply watching the action, this is your chance to be part of the adventure. Come along, meet the team, and discover what Scouting is all about!

i NORTHERN END OF EIGHTH AVENUE

SITE INFORMATION	SITE N73
SCOUTS TASMANIA	
NORTH STREET	

Do you understand carbon?

Wondering about the opportunities and risks of carbon forestry and whether it's right for your property?

Carbon Forestry 101 from Private Forests Tasmania provides practical information on the science, markets, methods and governance to help you make informed decisions that are best for you and your property.

**Visit us at Agfest
TasFarmers Tent,
Site 809, Eighth Avenue
Or call 1300 661 009**

CARBON FORESTRY 101 Private Forests Tasmania



ARROWQUIP LIVESTOCK ARENA

For nearly a decade, Rural Youth has proudly presented the Tasmanian Schools Livestock Cup, a cornerstone competition of Agfest that celebrates youth, agriculture, and excellence in livestock handling. This prestigious event brings together students from schools with their own farms, who travel from across Tasmania with their livestock to compete for the title of Rural Youth Livestock Cup Champions.


The Arrowquip Livestock Arena becomes the stage where young handlers and young judges demonstrate their skill, knowledge, and passion across a range of livestock breeds, showcasing the

very best of Tasmania's next generation of agricultural leaders.


Across the three days of Agfest, one exceptional student will be formally recognised for their outstanding skill, showmanship, animal care, and dedication with the presentation of the Rural Youth State President's Herdsman's Award, a prestigious honour celebrating excellence, commitment, and leadership in youth livestock competition.


In 2026, which school will rise above the rest, be crowned champions, take home the cup, and earn the ultimate bragging rights for the next 12 months.

VIRTUAL FENCING FOR BEEF AND DAIRY



The app and collar that lets you run your most productive farm. Virtually fence, move and monitor cows, with real time animal and pasture insights, 24/7.





Go to halterhq.com

DAY	TIME	EVENT CATEGORY
THURSDAY	9:00AM - 11:00AM	Sheep Young Judges
	11:45AM - 12:45PM	Beef Young Judges
	2:00PM - 3:00PM	Junior Farmer Challenge <small>(to be held in Tas Petroleum Central Arena)</small>
FRIDAY	9:00AM - 10:00AM	Dairy Young Judges
	10:15AM - 11:45AM	Beef Handlers
	12:15PM - 1:15PM	Dairy Handlers
	2:00PM - 4:00PM	Sheep Handlers
SATURDAY	9:00AM - 10:00AM	Beef Breeds
	10:15AM-11:00AM	Dairy Breeds
	11:15AM-12:15PM	Sheep Breeds
	1:00PM - 2:00PM	Team of Three (20 minutes each) 1. Dairy 2. Beef 3. Sheep
	3:00PM - 3:30PM	Presentation



TASMANIAN country

THE VOICE OF RURAL TASMANIA



Angus, Milly & Sophie Tole from Cressy with their limited-edition TC caps, last available in 2023 - don't miss out this time!

The statewide voice for rural and regional Tasmania

Commencing publication in 1980, just a few years before the first Agfest in 1983, Tasmanian Country and Agfest go together like wine and cheese, you simply can't have one without the other.

Tasmanian Country is the statewide voice for rural and regional Tasmania, distributed from King Island and Port Arthur and everywhere in between, covering

everything agricultural - the people, the livestock, the machinery, expert analysis of the markets and special features that make our island what it is.

The paper is delivered direct to the mailbox each Friday of every primary producer in the State, while also being available from newsagencies right across Tasmania - reaching a total of audience of more than 40,000 readers in the state's rural regions.

Tasmanian Country also has a strong online presence - tasmaniancountry.com has a live news feed to ensure you are up to date with the latest in agriculture statewide, make sure you bookmark it. It also features dedicated sections for community mastheads across the state, including the Derwent Valley Gazette and King Island Courier.

This year, Tasmanian Country will once again be exhibiting at Agfest, proudly continuing our decades-old partnership as the event's official newspaper partner.

We will be handing out free caps and stubby holders at Agfest with your signup to the TasCountry App in our "hat for the app" promotion. It's easy and free to do (we'll help if you want!), and gives you access to Tasmanian Country news alerts right in your pocket. Stay up to date with breaking news across the state that matters to you, and receive the complementary, limited-edition TC cap while stocks last. These were a runout item in 2023 when last offered; numbers will be limited each day, so don't miss out this year!

Already got a cap? If you were one of those lucky few, we also have stubby holders available for the first time, featuring the beloved cattle dog (long time readers will remember him!) - just sign up to the TasCountry App with notifications on.

The Tasmanian Country team, including Lana Best (editor), Simon McGuire (roving reporter) and James Young (advertising director) will all be at our usual site on the corner of CWA Grove and Main St, just near the main gate.

Make sure to swing by and come say g'day.

TAS PETROLEUM CENTRAL ARENA

Simon Martin Whips

What's that thunderous noise? Join us down at the Tas Petroleum Central Arena to watch the whip cracking master's from Simon Martin Whips, as they bring their world-class leatherwork and whip-cracking performance to the Tas Petroleum Central Arena.

ASA Young Farmer Challenge

In a Tassie first, teams of four young farmers going head-to-head in a race against the clock in in side-by-side time trials that demand speed, skill, and seamless teamwork. Catch the qualifying heats on Friday to see who has the nerves of steel required for Saturday's final. With a spot at the National finals on the line, the stakes are high come down to the Tas Petroleum Central Arena and cheer on the next generation of Tassie legends!



Site Awards

Don't miss the Agfest Site Awards, now taking place at the Tas Petroleum Central Arena Thursday at 1:30pm! Be there as we recognise outstanding exhibitors, impressive site displays, and the innovation that helps bring Agfest to life. It's a fantastic opportunity to experience the anticipation, support your favourites, and see who takes out top honours. With a great atmosphere and plenty of excitement, make sure you head along to the Tas Petroleum Central Arena and be part of the moment!

Rethink Waste

Think you know your recycling? Head over to the Tas Petroleum Central Arena for the Re-think Waste games to learn more about recycling!



Dog High Jump

It's fast, furry, and full of high-flying surprises! Head down to the TAS Petroleum Central Arena to see man's best friend compete in the dog high jump!

Gumboot Parade

Grab your best wellies and stomp on down to the Tas Petroleum Central Arena for the Gumboot Parade. Whether your boots are glittery, caked in mud, or classic farm-style black, join us for a fun-filled lap to support rural mental health and wellbeing. It's a chance to have a laugh, and show that in the rural community, we're all walking together.

IN THE ARENA - THURSDAY

8.30am	Launceston Grammer - Musical Performance
9.00am	Launceston Grammer - Musical Performance
9.30am	Launceston Grammer - Musical Performance
10.00am	Launceston Grammer - Musical Performance
10.30am	Bothwell Vocal Group
11.00am	Official Opening
11.30am	Simon Martin Whips
11.45am	Dinkum Dinosaurs
12.15pm	Jason Taylor
1.15pm	Simon Martin Whips
1.30pm	Site Award Presentation
2.00pm	Tasmanian TAFE Young Farmer Challenge

IN THE ARENA - FRIDAY

9.00am	Jason Taylor
10.00am	ASA Young Farmer Challenge - Heat
11.00am	Jason Taylor
12.00pm	Gumboot Parade
1.00pm	Dinkum Dinosaurs
1.30pm	Simon Martin Whips
2.00pm	ASA Young Farmer Challenge - Heat
3.30pm	Simon Martin Whips

IN THE ARENA - SATURDAY

9.30am	Trick Dogs
10.30am	Dinkum Dinosaurs
11.30am	ASA Young Farmer Challenge - FINAL
1.00pm	Simon Martin Whips
1.15pm	Dog High Jump Competition
2.15pm	Jason Taylor



AGFEST JUNIOR FARMER COMPETITION

See the next generation of farmers and agricultural professionals in action!

Rural Youth and TasTAFE are joining forces to bring you the 2026 Junior Farmer Competition at AGFEST! Watch students from across Tasmania put their skills to the test in fast-paced, hands-on challenges covering everything from livestock management to fibre production and farm maintenance.



Cheer on the young guns as they battle it out for the coveted Junior Farmer trophy in the Tas Petroleum Central Arena, Thursday 7 May, 2-3pm.

All the skills on display tie directly to TasTAFE qualifications — so if you're feeling inspired, swing by the Dairy Tas Pavilion to chat with TasTAFE staff about their courses (including fee-free options!).



QUALITY FUEL & LUBRICANTS

COME ON OVER TO THE TAS PETROLEUM CENTRAL ARENA AND ENJOY SOME BRILLIANT ENTERTAINMENT.



YOUR PARTNER FOR ANOTHER 30 YEARS

figline



SEE US AT SITE 143

SALES | HIRE TO BUY | HIRE | SERVICE



EQUINE ARENA

EASTERN END OF NORTH STREET

For the ultimate equine experience, make your way to the Equine Arena at the eastern end of North Street—where passion, skill, and tradition come together in one spectacular setting.

This year features a vibrant grass arena hosting a full program of captivating demonstrations, from elegant dressage to the fast-paced excitement of polocrosse. Surrounding the arena along Eleventh Avenue, you'll find a wide range of equine exhibitors representing industry professionals and showcasing everything the horse world has to offer.

Enjoy a dynamic lineup of highlights, including games by local pony club riders, a thrilling hunt demonstration by The Northern Hunt Club, a classic carriage display by the Northern Driving Society, and the return of crowd favourite Kendra Broad with an inspiring dressage performance.

With something for all ages, the Equine Arena is the perfect place to sit back, take in the atmosphere, and watch talented riders share their passion. Don't miss this unforgettable Agfest experience!





EQUINE ARENA TIMETABLE

THURSDAY	
8.30AM	Hunt Club
9.00AM	Pony Club Mounted Games
10.00AM	Cattleman's
11.00AM	Kenya
12.00PM	Mini Trots
12.30PM	Pony Club Mounted Games
1.00PM	Kenya
2.00PM	Lee Davis
3.00PM	Hunt Club

FRIDAY	
8.30AM	Junction Farm
9.00AM	Hunt Club
10.00AM	Show Jumping
11.00AM	Kenya
12.00PM	Northern Tas Driving Society
12.30PM	Pony Club Mounted Games
1.00PM	Kenya
2.00PM	Lee Davis
3.00PM	Cattleman's

SATURDAY	
8.30AM	Pony Club Tas Dressage Quadrille
9.00AM	Cattleman's
10.00AM	Polo Cross
11.00AM	Kenya
12.00PM	Northern Tas Driving Society
1.00PM	Kenya
2.00PM	Lee Davis
3.00PM	Northern Tas Driving Society

DELMADÉ
Shaping the Land

**NO MORE
 TILLAGE
 DOWNTIME**

OFFSET DISCS THAT ARE
 BUILT TO WITHSTAND THE
 TOUGHEST OF CONDITIONS.

1800 335 623
 See us at Site N11 North Street



AUSTRALIAN MADE
 DELMADÉ



SITE
822

TKD TRADIE CHALLENGE

Come on down to site 822 to see the TKD Tradie Challenge, proudly sponsored by Tool Kit Depot, bringing together skilled teams from across the trade community for a hands-on competition with a meaningful outcome.

Making its debut at Agfest, this inaugural event adds an exciting new dimension to the program, showcasing the expertise and creativity of the region's tradies in a live, high-energy setting.

Participants will design and construct

timber play equipment, putting their craftsmanship, teamwork, and problem-solving abilities to the test in a dynamic, time-bound environment.

More than just a showcase of technical skill, the challenge is grounded in community impact. All completed builds will be donated to a local playgroup, providing safe, engaging spaces for children to learn and play.

BE SURE TO SEE THE FINAL PRODUCTS JUDGED ON SATURDAY AT 1PM!



BLUE TREE PROJECT

The Agfest Blue Tree Initiative is a bold and visible reminder of the importance of mental health in rural and regional communities. Located at the North East Gate of the Agfest site, a single tree has been painted bright blue to spark conversations, encourage connection, and show that no one has to face challenges alone.

This striking installation has been made possible through the generous donation of paint from Watty! Paints, delivering a vibrant and lasting finish. The Tasmanian Arboricultural Organisation has provided skilled volunteer support to ensure the tree was prepared and painted with care and professionalism. Rural Youth volunteers have also brought energy and enthusiasm to the project, playing a hands-on role in bringing the Blue Tree to life.

Together, these contributions create more than just a visual feature—they establish a meaningful focal point for reflection, support, and community spirit at Agfest



Help create a Healthier Tasmania >

In the air and on the ground,
you can make a difference
by leaving a gift in your Will.

To discuss bequests, programs,
donations or sponsorship,
call (03) 6391 0509

- To donate online, scan our QR code or visit:
www.flyingdoctor.org.au/tas/support-us/donate
- Email us on enquiries@rfdstas.org.au
- Write to us at: Royal Flying Doctor Service Tasmania
PO Box 140, Evandale TAS 7212



Royal Flying Doctor Service
TASMANIA



Stockpro

Livestock Handling Equipment

SHEEP & CATTLE STOCKYARDS

DESIGNED TO WORK.

CONSULT DESIGN FABRICATE INSTALL

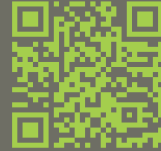
See us at
**AGFEST
FIELD DAY**
Site 230,
Second
Avenue

REQUEST A QUOTE

STOCKPRO.COM.AU | 1800 354 415

ReTHiNK Waste TASMANIA

The go-to place for answers
on what to do with your waste



Visit us at site S60-1
South Street x Sixth Ave

Visit us at AGFEST



At Marcus Oldham, students benefit from an immersive industry-led learning environment, overseas study tours, industry placements and experienced, inspiring teaching staff.

Our accelerated degree courses in Agribusiness or Agriculture are highly regarded by industry and employers, and Marcus Oldham graduates go on to have interesting, diverse careers, with outstanding opportunities for employment and progression.

Visit us at Agfest (Site 210, 2nd Avenue)
and find out more or visit
marcusoldham.vic.edu.au/courses



Study Agriculture or Agribusiness at Marcus Oldham

marcusoldham.vic.edu.au

HOLD MY BEER TC STUBBIES ARE HERE

Already got a cap last time? Subscribers to the **TasCountry App** can now receive a free, limited-edition TC stubby holder while stocks last. Get in quick! We have limited stock available each day.



- Download the **TasCountry App** from your app store
- Subscribe to receive notifications and keep up to date with rural news from across the state
- Show the App at our site on the corner of Main St & CWA Grove
- Get your stubby holder (give it a few years - this will be a collector's item)



BONUS: Wear your TC cap to our site and we might just give you two!

CAN'T GET THE SHIT OFF YOUR BOOTS?

public relations
government relations
crisis management



enquiries@emrs.com.au
03 6223 3333

Your Country, In the Cloud.



SUBSCRIBE NOW:
www.tasmaniancountry.com

AIR & POWER FOR FARMS

CAPS supply air and power generation solutions, partnered with global brands.
Our team delivers the local support and gear that you need.



AIRMAN



COMPLETE AIR & POWER SOLUTIONS
PHONE OUR LAUNCESTON BRANCH 1800 800 878





- ### MAIN ATTRACTIONS
- Equine Arena
 - Peter Brock Memorial 4WD Demonstrations
 - Tasmanian JackJumpers & Tasmanian Jewels
 - Rev it Up Racing
 - Heritage Display
 - Arrowquip Livestock Arena
 - Quercus Park United Kennel Club
 - Unique Charters
 - Animal Nursery
 - TKD Tradie Challenge
 - Dinkum Dinosaurs

- ### FEATURES
- Scouts Tas Climbing Tower
 - Craft Pavilion
 - Craft Market
 - Caravan & Camping Show
 - MAST Boat Show
 - Tasmanian Country

- ### FACILITIES
- Quercus Taste
 - Community Caterer
 - Picnic Area
 - Toilets
 - Accessible Toilets
 - Lost Children
 - Baby Feed & Change

Barossa Living BY *OneCare*

Selling Fast



SELLING OFF THE PLAN. FIXED PRICING ENDS SOON. SECURE YOUR PLACE NOW.

New development:

- 56 villas and apartments
- Mountain and sea views
- 2 bedrooms, 2 bathrooms
- All modern conveniences
- Prices start from \$715,000






Contact Carol Joseph:

- 📍 33A Clydesdale Avenue, Glenorchy
- ☎ (03) 6220 1260
- ✉ barossaliving@onecare.org.au

SCAN TO LEARN MORE

FIND ONECARE SERVICES AT SITE E10

AKUBRA **WARATAH**
FIRST - BECAUSE IT LASTS.

SOMETHING TO HANG YOUR HAT ON



Spend \$10,000 (incl GST) on Waratah Fencing* and receive a \$360 Akubra Gift Card to pick your favourite style.


1st May - 30th June 2026

*T&C's Apply. For more information and to claim your Akubra gift card, visit www.waratahfencing.com.au/eofy2026

CalfWays




Support the CalfWays Tasmanian Action Plan
Ensure a viable option for every calf

Get involved







PAYWALL-FREE NEWS:
www.tasmaniancountry.com



POLL POSITION
with Stansfield and AJ

The only place to get clear, unfiltered, straight-talking Tasmanian political analysis and news.

Find and Subscribe at our YouTube channel or on your favourite podcast app.

HOLD MY BEER TC STUBBIES ARE HERE



1. Download on your app store
2. Subscribe to receive notifications
3. Show us at the TC tent (Main St / CWA Grove)
4. Keep your cans cool with a kelpie

Read what the locals read.

The *Sorell Times*, *Tasman Gazette* and *East Coast View* are the primary local publications for Southeastern Tasmania.

These sister papers are published monthly as a split run, with localised editorial content unique to each, but a combined advertising audience of more than 24,900 readers from Lauderdale to Bicheno.

This model presents a much larger audience share than community publications can traditionally offer - giving advertisers access to three markets for the price of only one.

To discuss competitive advertising or subscription, contact James today:
0449 178 715 or
james.young@fontpublishing.com.au



DELMADÉ
Shaping the Land
WEY LTD



SICK OF STOPPING TO MOVE ROCKS?

Ask about the Schulte High Rise Rock Picker. In stock now!

See us at Site N11 North Street

1800 335 623

TASMANIAN IRRIGATION IS BACK AT AGFEST



- 🍯 Learn about new irrigation projects
- 🍯 Purchase water from operating schemes
- 🍯 Discuss environmental best practice
- 🍯 Meet the TI team
- 🍯 Hear what TI water means for farm businesses and communities

Visit us at Agfest from 7 - 9 May

TasFarmers Marquee
 Eighth Avenue, Site numbers 809, 811 and 813

www.tasmanianirrigation.com.au



Join St Lukes at AGFEST and get 6 Weeks Free*

We'll help you find cover that's the perfect fit.

Visit us at Site 612, Sixth Avenue

*T&Cs apply

st.lukes

TASMANIA'S MOST TRUSTED FARMERS' NUMBER ONE SOURCE FOR RURAL NEWS

More farmers trust *Tasmanian Country* than any other media on any platform.

- Tasmania's only statewide publication
- Reaching more than 40,000 readers weekly - over 80% of these directly involved in agriculture
- Delivered directly to the mailbox of every farmer in the state
- In-depth coverage in weekly print edition
- Daily updates via TasCountry App
- Highly demanded advertising platform with markedly high retention and consistently low vacancy

Tasmanian Country - it's where the farmers are.

www.tasmaniancountry.com/advertise





TASMANIAN

Woolworths



YOUNG FARMER

OF THE YEAR 2026



\$40,000

**WORTH OF PRIZES
INCLUDING THIS
YAMAHA UTV!**

THIS IS YOUR CHANCE TO CHALLENGE YOURSELF, BUILD SKILLS AND CONNECT WITH OTHERS IN THE INDUSTRY.

RUN-OFFS

18 July 2026

STATE FINAL

22 August 2026

**FIND OUT
HOW TO
ENTER!**



RURAL  YOUTH

Find out more and enter at ruralyouth.com.au

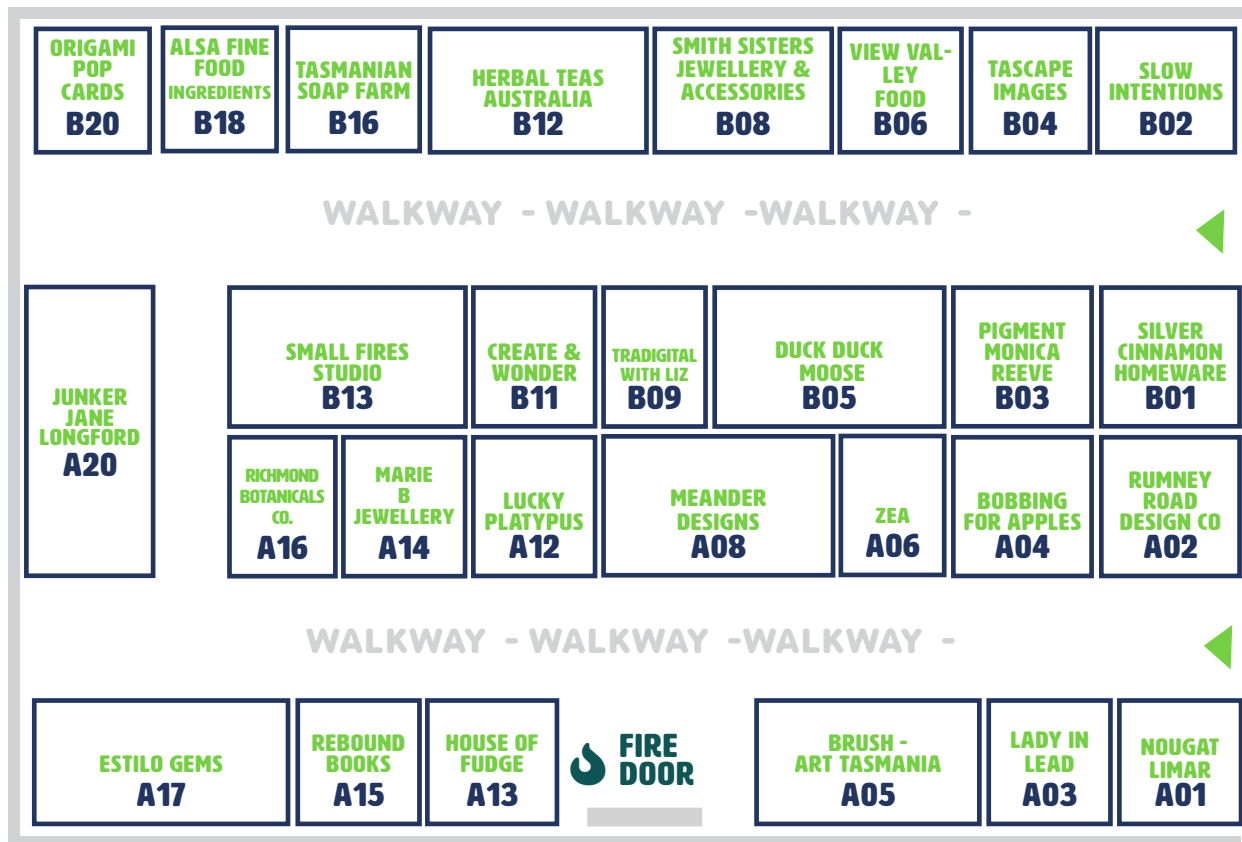
Open to all young Tasmanian's aged 15-30.

CRAFT PAVILION

Are you searching for the perfect gift — for someone special or even yourself? Look no further than the Craft Pavilions, proudly showcasing 54 new and returning unique Tasmanian and interstate exhibitors.

Discover mouth-watering treats, beautiful homewares, and carefully handcrafted jewellery, soaps, candles and art pieces — each thoughtfully created and ready to take pride of place in your home. With such a diverse and talented line-up, there truly is something for everyone in the Craft Pavilions.

SITE INFORMATION
CRAFT PAVILION
PAVILION A-B



TASMANIA, WE'RE HERE FOR YOU.

Tasmac is a your farm machinery specialist, with four locations across Tasmania. We support Agriculture, Construction, & Lifestyle customers with industry-leading equipment & expertise.

Our experienced & knowledgeable team is committed to delivering exceptional service across sales, parts, & aftersales support — ensuring you get the performance & reliability you can count on.



CRAFT PAVILION



SITE INFORMATION
CRAFT PAVILION
PAVILION C-D

COSGROVE & CO D20	PUZZLE ART AUSTRALIA D18	ART BY FIRE D16	FAT CAT POTTERY D12	RHUBY DELIGHTS D10	BOWERBIRD JEWELS D06	KNOTS IN STRING D04	NORWEX D02
----------------------------------	-------------------------------------	----------------------------	--------------------------------	-------------------------------	---------------------------------	--------------------------------	-----------------------

WALKWAY - WALKWAY - WALKWAY -

MUMMY & ME HANDMADE D19	BENDIGO BRITTLE D15	FLUTURI D13	SCRIBBLE MAT D11	AUSSIE KIDS AT WORK D07	ALL THE B'S D05	HILLTOP HANDMADE D01
	DRIED & PRESERVED BLOOMS C16	UNCLE JOHN'S FRESH LICORICE C14	MUMMA SHAZ C12	LOULA-EVE AROMAS C08	KACHOO C06	BARNYARD BUDDHA BOY C02

WALKWAY - WALKWAY - WALKWAY -

MUSAI LEATHER GOODS C17	AUNTIE'S QUAIN'T QUILTS C15	JO'S JOY C13	 FIRE DOOR	JENNA CHARTRAND FINE ART C05	BLOSSOM & RAYNE C01
------------------------------------	--	-------------------------	--	---	------------------------------------



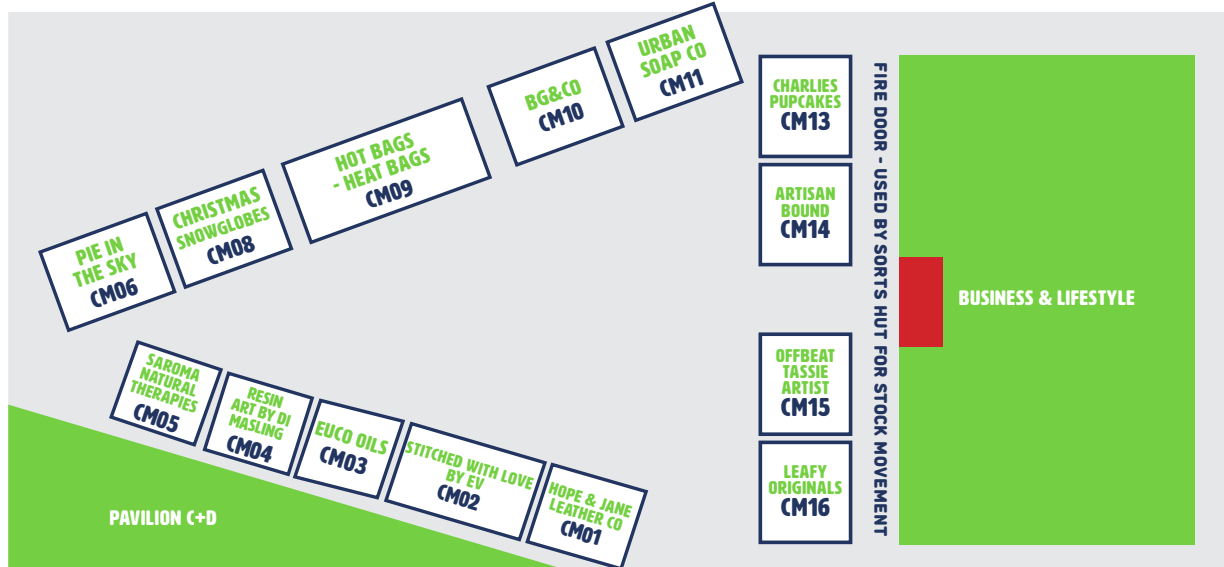
Our business is building yours.

 **BISON SHED, SITE N08**

CRAFT MARKET

Taking on a new location, the Craft Market is back by popular demand for Agfest 2026! Located between Pavilion C-D and E-F, we highly recommend swinging by Quercus Taste 5 then taking a wander through the craft market where an array of exhibitors are ready to showcase their products. While enjoying the fresh

Tasmanian air, in the Craft Market you will find an array of handcrafted wooden and leather goods, a variety of garlic seeds ready for your garden, resin art, children's clothes and stunning jewelry. The Craft Market is not to be missed!



UNIVERSITY of TASMANIA 

Hands-on fun for all

Explore science, sustainability, agriculture and more!

Visit the University Pavilion and HealthStop at the eastern end of North Street

To find out more visit utas.edu.au/agfest



WITH OVER 100 YEARS OF COMBINED EXPERTISE IN GRAIN STORAGE AND DRYING.

AGFEST FIELD DAYS

SHARED SITE: 349

1-5 Jones Street, Forbes NSW 2871
P: 1800 046 046 | E: sales@hesilosforbes.com.au

12 Angus Drive, Forbes NSW 2871
P: (07) 4631 4300 | E: sales@agridry.com.au

Don't miss out next year.

Secure an early bird placement in the Tassie's largest agricultural publication of the year.

James Young: **0449 178 715**
james.young@fontpublishing.com.au



Independent Oils

We're more than just oils....

TO SEE OUR FULL RANGE & AGFEST SPECIALS COME VISIT US AT SITE 449 FOURTH AVENUE

AUTO KLENE TASMANIA

Try it once, use it forever!



ARE YOU NEW TO *The Region?*

If you're 15-30 years old and want adventure, skills and great mates, Rural Youth is for YOU!

Hands-on experiences & training

Unforgettable events & social activities

Be part of Agfest - one of Australia's biggest field days!

📍 *Find your local club & join today!*

✉ admin@ruralyouth.com.au | ☎ 6331 6154

RURAL  **YOUTH**

ruralyouth.com.au

AGRICULTURAL ACCESSORIES

De Wit Trading - Wrangler New Zealand	113B	First Ave
Direct Seeding and Harvesting Equipment	NN21A	North-North Street
Fence-Line Solutions	NN31	North-North Street
Flinn Design Pty Ltd	NN17	North-North Street
Gallagher Australia	626	Sixth Ave
Greenmate Ag/Truegrid	248	Second Ave
Halter	M96	Main Street
Heiniger Australia	NN22	North-North Street
Mud Grids Tasmania	M05B	Main Street
Payton Agencies	345	Third Ave
Rotech Rural	NN23	North-North Street
Stockade Australia	821	Eighth Ave
Tas Stock Yards & Panels	M95	Main Street
UMS	1028	Tenth Ave
Waratah Fencing Products	NN13	North-North Street
Wireman	230	Second Ave

AGRICULTURAL MACHINERY

Adaptalift Group	NN11	North-North Street
Adtrans Truck Centre - IVECO & Hyundai Electric Trucks	352	Third Ave
Agline Irrigation	143	First Ave
agnFlow Pty Ltd	254	Second Ave
Agri Machinery Pty Ltd	N16	North Street
Agri Tech Services (Tas) Pty Ltd	M20	Main Street
Agriday	349	Third Ave
Agroecopower	325	Third Ave
A-Line Group (TAS) Pty Ltd	CWA2	CWA Grove
Alpha Electrics & Water	215	Second Ave
ArmourGroup	N38	North Street
Avant Equipment	252	Second Ave
Bauer GmbH Australia Pty Ltd	241	Second Ave
Blackley Pipelines and Irrigation	M34	Main Street
Brandt	223	Second Ave
C R Kennedy and Company Pty Ltd	611	Sixth Ave
Cape Country Rural	M20	Main Street
CAPS Australia	729	Seventh Ave
CJD Equipment	441	Fourth Ave
CMF Machinery	146	First Ave
Darling Irrigation	246	Second Ave
Delmade Pty Ltd	N11	North Street
DGA Tasmania	M26	Main Street
Diesel Tune & Performance	343	Third Ave
DLM Machinery	N21	North Street
Dobmac Agricultural Machinery	N12	North Street
Eagle i Machinery Pty Ltd	247	Second Ave
Elite Attachments Australia	NN29	North-North Street
EPG Engines/Kohler-engineered Products Group	NN33	North-North Street
Fordham Agricultural Machinery Pty Ltd	144	First Ave
Gaffney Machinery	N28	North Street

GAFM P/L - Greg Allan Farm Machinery	227	Second Ave
Global Poly Water Tanks	608	Sixth Ave
Hitachi Construction Machinery (Aust)	NN28	North-North Street
Irrigation and Dairy Solutions	M74	Main Street
Island Irrigation	251	Second Ave
Jaytric Logistics (Tas) Pty Ltd	M08	Main Street
JF Machinery Pty Ltd	M25	Main Street
Komatsu Australia Pty Ltd	128	First Ave
Lely Australia Pty Ltd	M61	Main Street
Lucas Mill	NN33	North-North Street
Manheim	447	Fourth Ave
Marshall Machinery	508	Fifth Ave
McLaren Agricultural Machinery Pty Ltd	142	First Ave
Midland Tractors	M13	Main Street
Milk Bar	226	Second Ave
NAES	351	Third Ave
Nicolas Machinery	243	Second Ave
OneAg Sitech	405	Fourth Ave
Onetrak Pty Ltd	326	Third Ave
OnRoad OffRoad Drone	347	Third Ave
Plasma Strike Ag Solutions	NN32B	North-North Street
Pro Drone Services Tasmania	M74	Main Street
QuikFence	NN27	North-North Street
Scania Australia	451	Fourth Ave
Seed Cleaners Australia	242	Second Ave
Sherwell Silos - Tasmania	NN16	North-North Street
Sign Guise	109	First Ave
Southern Machinery Pty Ltd	N22	North Street
Spaulding Drillers Pty Ltd	329	Third Ave
Sprayerbarn Tasmania	152	First Ave
TASMAC	N07	North Street
Tastrucks	444	Fourth Ave
TR & KR Shipton Pty Ltd	M07	Main Street
TTMI	149	First Ave
Tutt Bryant Equipment	154	First Ave
United Forklift And Access Solutions	NN24	North-North Street
Van Diemens Land Irrigation	123	First Ave
Walters Contracting	330	Third Ave
William Adams Pty Ltd	M29	Main Street

AUTOMOTIVE

AJL Heavy Equipment	308	Third Ave
ARB 4x4 Accessories	N42	North Street
Autoklene Tasmania	449	Fourth Ave
Bonney Energy	N70	North Street
Buckby Motors	430	Fourth Ave
Buckby Motors Subaru	430	Fourth Ave
Caltex	M50	Main Street
Can-Am	523	Fifth Ave
CFMOTO Australia	733	Seventh Ave
Driven Sound Vision	S55	South Street

ELK Industries TAS	407	Fourth Ave
Fatbuilds 4x4	N53	North Street
Fullston Tanks	NN34A	North-North Street
Hamer 4x4	N64	North Street
Honda Australia Motorcycles and Power Equipment	538	Fifth Ave
Independent Oils	449	Fourth Ave
Isuzu UTE Australia	529	Fifth Ave
Jumpbooster	440	Fourth Ave
King Trailer Industries	714	Seventh Ave
Leightons4x4/Burnie4x4	N58	North Street
Lowes BP	N40	North Street
Motors Tas Pty Ltd	N37	North Street
MotorShield	601	Sixth Ave
Polaris Sales Australia	722	Seventh Ave
PPG Industries	602	Sixth Ave
Pro Fab Custom Trays and Canopies	S59B	South Street
Sunrise Trailers And Hire Pty Ltd	428	Fourth Ave
Tas Petroleum	M50	Main Street
Tassie Lubricants	M59	Main Street
Tassie Trailers	528	Fifth Ave
Tassie Trays	N51	North Street
Toyota Australia	N39	North Street
Van Diemen Dirt Bikes	346	Third Ave
Yamaha Motor Australia	424	Fourth Ave

CLOTHING

AAA SOCKS & UGGS	M49	Main Street
Allgoods Pty Ltd	M54	Main Street
Aussie Kids At Work	D07	Pavilion D
Austealth	913	Ninth Ave
BB's Country	923	Ninth Ave
Bendigo Country Clothing	M24	Main Street
Best Ever Boots	309	Third Ave
BG&Co	CM10	Outside Craft
Blossom & Rayne	C01	Pavilion C
Bowerbird Jewels	D06	Pavilion D
Brand Em Outfitters	823	Eighth Ave
Branded Country	101	First Ave
Cosgrove & Co	D20	Pavilion D
Country And Vintage Babes Clothing	M112	Main Street
Country Sass	812	Eighth Ave
Country Trucker Caps	M82	Main Street
DLB Clothing	1027B	Tenth Ave
Emelda's Shoes	922	Ninth Ave
Estilo Gems	A17	Pavilion A
Far A Head	214	Second Ave
Fluturi	D13	Pavilion D
Guy Cotten Wet Weather Gear	228	Second Ave
Hilltop Handmade	D01	Pavilion D
Hope & Jane Leather Co	CM01	Outside Craft
IR Sheepskin & Wool Products	1127	Eleventh Ave
Jo's Joy	C13	Pavilion C

Junkerjane Longford	A20	Pavilion A
Kachoo	C06	Pavilion C
Little Helpers Kidswear	N78	North Street
Lucky Platypus	A12	Pavilion A
Marie B Jewellery	A14	Pavilion A
Meander Designs	A08	Pavilion A
Mojo Hats n More	311	Third Ave
Mummy & Me Handmade	C20	Pavilion C
Musai Leather Goods	C17	Pavilion C
Pie in the Sky Jewellery	CM06	Outside Craft
Ranger Outdoor	1136A	Eleventh Ave
RB Sellars	M71	Main Street
Ridgeline Clothing Australia	831	Eighth Ave
Rumney Road Design Co	A02	Pavilion A
Silvercinnamon / AGoodYarn	B01	Pavilion B
Simon Martin Whips & Leathercraft	M83	Main Street
Smith Sisters Jewellery & Accessories	B08	Pavilion B
Sports Hut	S38	South Street
Step Flex Orthotics	S45	South Street
Stitched With Love By Ev	CM02	Outside Craft
Thermal Theory	F03	Pavilion F

COMMUNICATION

ABC Radio	M92	Main Street
Australian Community Media - The Examiner/The Advocate	M91	Main Street
LAFM / Chilli FM	S49	South Street
NBN Co	208	Second Ave
Oz Mobile Phone Accessories	M116	Main Street
Tasmanian Country	M04	Main Street
Telstra	S50	South Street
Vision Plus	323	Third Ave

CONSTRUCTION

ABx Group	S06-1A	South Street
Bison Constructions Pty Ltd	N08	North Street
Cranes Combined Pty Ltd	516B	Fifth Ave
Creative Wood Fired Products	111	First Ave
Dairy Shelters Australia	M96	Main Street
Degree C Solar	E07	Pavilion E
Enlightened Energy	116	First Ave
Enlightened Powerstations	116	First Ave
EnviroTas	901	Ninth Ave
Formplex Weatherboards	CWA25A	CWA Grove
In Series Electrical and Solar	CWA12	CWA Grove
knest modular	102	First Ave
Mode Energy	M79	Main Street
Nuflow Technologies	303	Third Ave
Oakstone Studios Tasmania	CWA21	CWA Grove
Orion Australia Pty Ltd	826	Eighth Ave
Paal Kit Homes	CWA13	CWA Grove
Peltzer Construction	M94	Main Street
Playmatta	111	First Ave
Powercom Solar	M79	Main Street

Prime Commercial Sheds	CWA23	CWA Grove
RPC Promo ~ Super ladder Supa Penz	107	First Ave
Skyline Sheds Tasmania PTY LTD	CWA9	CWA Grove
Solahart	202	Second Ave
Spa World	S33	South Street
Statewide Tanks	106	First Ave
Tankworld Tasmania	S33	South Street
Tas Building Group- (Apprentice Employment & Training)	CWA14	CWA Grove
Tas Manufactured Housing	CWA31	CWA Grove
Tasbuilt Homes Pty Ltd	S03	South Street
Tassie Flatpack	CWA18	CWA Grove
Tasvent Supply Company	104	First Ave
Taylex Australia	305	Third Ave
Taylor and Stirling	CWA17	CWA Grove
TCB Affordable Homes	CWA5	CWA Grove

EDUCATION

Civil Contractors Federation Tasmania	M16	Main Street
Hagley Farm Agricultural Learning Centre	809	Eighth Ave
Launceston Church Grammar School	212	Second Ave
Link Resources - Safety Training Tasmania	M16	Main Street
Marcus Oldham College	210	Second Ave
Master Builders Tasmania	M16	Main Street
NECA Education & Careers	1019B	Tenth Ave
Primary Industries Education Foundation Australia	809	Eighth Ave
Regional Drought Resilience Program (Drought Ready Tas)	807	Eighth Ave
ReThink Waste Tasmania	S60-1	South Street
RuralBiz Training	807	Eighth Ave
St John Ambulance - Tasmania	613	Sixth Ave
Tas Farm Innovation Hub	807	Eighth Ave
Tasmania SES	S79	South Street
Tasracing	M60	Main Street
TasTafe	M96	Main Street
Tristar Aviation	804	Eighth Ave
University Of Tasmania	N96	North Street

FOOD

Alsa Fine Food Ingredients Pty Ltd	B18	Pavilion B
Angus Gourmet Steak Sandwiches	726-21	Seventh Ave
Anvers Tasmania	M96	Main Street
Ashgrove	M96	Main Street
Australian Honey Products	S53	South Street
Baba's Kebab	110-4	First Ave
Bean and Leaf Coffee Van	M96	Main Street
Bendigo Brittle	D15	Pavilion D
Bloom Coffee	C3-1	Outside Craft
Bobbing for Apples	A04	Pavilion A
Bogan Road Distillery	M114B	Main Street

Bracknell Primary School Association P and F Association	803	Eighth Ave
Brao	726-19	Seventh Ave
Bru Coffee Hut	805	Eighth Ave
Bruny Island Oysters Tasmania	404-9	Fourth Ave
B's Little Bakehouse	110-11	First Ave
Buttons Brewing	404-3	Fourth Ave
Callipari Wine / Ned Kelly Red	M122	Main Street
Ceylon Cuisine Pty Ltd	726-1	Seventh Ave
Chillin' Dory	110-9	First Ave
Daiquiri Isle Pty Ltd T/a Ice House Beverages	315	Third Ave
Darby-Norris Distillery	1123B	Eleventh Ave
Deloraine High School	304-306	Third Ave
Deviant Distillery	404-28	Fourth Ave
Devils Desserts	N27-6	North Street
dev's dumpling den	C3-4	Outside Craft
Dipped	110-6	First Ave
DONUT 7	110-1	First Ave
Drifters End Distilling Company	1121B	Eleventh Ave
Eat Me Happy	C3-9	Outside Craft
Elle's Pantry	726-19	Seventh Ave
Evandale Cricket Club	124	First Ave
Exotic Filled Candy and Licorice	M120A	Main Street
Fancy Freeze Tasmania	S10-1	South Street
FATV Jerky	1024	Tenth Ave
Festival Tempura Mushrooms	404-12	Fourth Ave
Food of Himalayas	N27-1	North Street
Formosa Bites	404-22	Fourth Ave
Frankly Divine	N27-4	North Street
Fried and Loaded	404-16	Fourth Ave
Fried and Loaded	726-8	Seventh Ave
Gaunts Farm	N27-2 & 3	North Street
Grassy on the go - Redgrassopper pizza	404-1	Fourth Ave
Hagley Farm Primary School	622	Sixth Ave
Halls Barbeque	110-19	First Ave
Hartz	726-4	Seventh Ave
Heavenly Jerky	M130	Main Street
Herbal Teas Australia	B12	Pavilion B
Hillwood Football Club Inc	524	Fifth Ave
Hot Chilli Mama	1035A	Tenth Ave
House Of Fudge	A13	Pavilion A
Island Coast Spirits	404-26	Fourth Ave
Jim's Lebanese Kebabs	N27-11	North Street
Joshy's BBQ	726-11	Seventh Ave
Lauriston Grove	1019A	Tenth Ave
Little Rivers Brewing Co + Bridport Distilling Co	404-14	Fourth Ave
Lungo Coffee Bar	726-3	Seventh Ave
Mini Pancakes	726-2	Seventh Ave
Montolè Paella	726-10	Seventh Ave
Mount Gnomon Farm	M96	Main Street
MRS C'S	M95	Main Street
Mumma Shaz	C12	Pavilion C
Nougat Limar	A01	Pavilion A

Nours Kebabs and Burgers	C3-7	Outside Craft
OMG! Decadent Donuts North Tasmania	404-10	Fourth Ave
Paddock to Pete	726-18	Seventh Ave
Pig and Chook Thai Food Truck	404-19	Fourth Ave
Pink Buns	N27-10	North Street
Poffertjes (Mini Dutch Pancakes)	726-15	Seventh Ave
Pure And Purple Garlic	618A	Sixth Ave
Quercus Park United Kennel Clubs	N91	North Street
RAST Authentic Kitchen	110-18	First Ave
Rhuby Delights	D10	Pavilion D
Robbies Woodfired Pizzas	110-13	First Ave
Rory's Hot Spuds	404-5	Fourth Ave
Sailor Food Truck	N27-8	North Street
Salami Shack	1123A	Eleventh Ave
Saya	C3-2	Outside Craft
Sheffield Lamb Bar	S25	South Street
Small Brew	606	Sixth Ave
Smoke and Spice Tasmania	M120B	Main Street
Smoked by Lost Captain	404-29	Fourth Ave
Snowgum Distillery	926A	Ninth Ave
Sodalicious	404-8	Fourth Ave
Soma Coffee	126	First Ave
Sorella Coffee and Wine	624	Sixth Ave
Southern Wild Distillery	404-18	Fourth Ave
Spirit of the Coal Valley	1027A	Tenth Ave
St Patrick's Old Collegian's Football Club	604	Sixth Ave
Stasberry	404-21	Fourth Ave
Stoods Mobile Catering	110-2	First Ave
Strawberry Delight	726-16	Seventh Ave
Stukies Brewing Co	404-24	Fourth Ave
Tasindo	C3-11	Outside Craft
Tasmanian Gourmet Seafoods	726-5	Seventh Ave
TASMOSA	404-7	Fourth Ave
Tassie Sweet & Savoury Stix	110-7	First Ave
Tasty Treats Across Tassie	526	Fifth Ave
The Country Women's Association In Tasmania (Inc)	902	Ninth Ave
The Fizzy Fix	110-15	First Ave
The Loaded Carvery	110-16	First Ave
THE RUB HUB	105	First Ave
The Tassie Hemp Shop	M114A	Main Street
The Tea Equation	1021	Tenth Ave
The Wooden Ladle Eatery	404-25	Fourth Ave
Traditions	404-27	Fourth Ave
Uncle John's Fresh Licorice	C14	Pavilion C
Valley View Food Pty Ltd	B06	Pavilion B
Van Diemens Land Creamery	M96	Main Street
Vee's Lollies	S10-1	South Street
Waffle O'Clock	404-4	Fourth Ave
Wanderer Mead	M111B	Main Street
West-Bee Honey	M97	Main Street
Western Tiers Distillery	404-11	Fourth Ave
Woolworths	S49	South Street
You Deserve It	1023	Tenth Ave

You, Me & Gluten Free	C3-6	Outside Craft
-----------------------	------	---------------

FORESTRY

Colbrook Industries	806	Eighth Ave
Forest Practices Authority	809	Eighth Ave
Hardwood Mills Australia	NN09	North-North Street
HST Trees Services Pty Ltd	M59	Main Street
Private Forests Tasmania	809	Eighth Ave
Randalls Equipment	NN15	North-North Street
Superaxe	452	Fourth Ave
Sustainable Timber Tasmania	810	Eighth Ave

HARDWARE

Atkins Sales & Marketing	CWA16	CWA Grove
Australian Chainsaw Products	M63	Main Street
Bunnings Trade	821	Eighth Ave
Cloud 9 Deluxe Hanging Chairs	313	Third Ave
G - Force Auto Gate Openers	CWA25B	CWA Grove
Husqvarna Launceston Mower And Chainsaw Center	409	Fourth Ave
KAR-TAS	S09	South Street
Kwik Shear	903	Ninth Ave
Laser Systems Tasmania	S10-4	South Street
Makita Australia	625	Sixth Ave
Mobishear Australia	936B	Ninth Ave
Nubco	M30	Main Street
Pellows Saws & Mowers	S43	South Street
PROKUT	M39	Main Street
Tasweld	Pavilion G	Pavilion G
Tool Kit Depot	M73	Main Street
Total Air Supplies	206	Second Ave
Total Tools Launceston	M53	Main Street
Weedwakka	1032	Tenth Ave

HOMEWARES

All the B's	D05	Pavilion D
Apple Patch Sewing Centre	307	Third Ave
Art By Fire	D16	Pavilion D
Artisan Bound	CM14	Outside Craft
Aussie Heatwave Fireplaces	CWA11	CWA Grove
Barnyard Buddha Boy	C02	Pavilion C
Brush - Art Tasmania	A05	Pavilion A
Canna Oils	926B	Ninth Ave
Christmas Snowglobes by HouseworX	CM08	Outside Craft
Divine Objects	933	Ninth Ave
Dr Drums Furniture	1033	Tenth Ave
Dried and Preserved Blooms	C16	Pavilion C
Duck Duck Moose Handmade	B05	Pavilion B
Euco Oils	CM03	Outside Craft
Fat Cat Pottery	D12	Pavilion D
Forty Winks Tasmania	921	Ninth Ave
Hot Bag - Heat Bags & Coolie Bags	CM09	Outside Craft
Jenna Chartrand Fine Art	C05	Pavilion C

Knots in String	D04	Pavilion D
Kulmaren Gardens	M113A	Main Street
Kunzea Tasmania	M124	Main Street
Laser Stuff Tasmania	M69	Main Street
Lavender Park Creations	345	Third Ave
Leafy Originals/Lewina Organic Cosmetics	CM16	Outside Craft
Lereve	S06-1B	South Street
Lewina Organic Cosmetics	CM16	Outside Craft
Loula-Eve Aromas	C08	Pavilion C
Niagara Medical Therapy	F07	Pavilion F
Norwex	D02	Pavilion D
Origami Pop Cards	B20	Pavilion B
Puzzle Art Australia	D18	Pavilion D
Resin Art by Di Masling	CM04	Outside Craft
Richmond Botanicals Co.	A16	Pavilion A
Saroma Natural Therapies	CM05	Outside Craft
Scribble Mat	D11	Pavilion D
Sleeptime	M80	Main Street
Slow Intentions	B02	Pavilion B
Small Fires Studio	B13	Pavilion B
Tascape Images	B04	Pavilion B
Tasmanian Soap Farm	B16	Pavilion B
Ultramatic	M89	Main Street
Urban soap co	CM11	Outside Craft
Vaclock	903	Ninth Ave
Waverley Mills	F02	Pavilion F
Zea	A06	Pavilion A

HORTICULTURE

2WP Pty Ltd	S06-4	South Street
Achmea	N74A	North Street
CutAbove Tools	NN12	North-North Street
Drewitt Family Farms	832	Eighth Ave
Dulverton Organics	N82	North Street
Gecko Decko	1036	Tenth Ave
Horticultural and Landscape Supplies	1031	Tenth Ave
Hydro Oasis	1025	Tenth Ave
Kelpomix Tasmania	S07	South Street
Prices Water Features & Garden Ornaments	934	Ninth Ave
Sproutwell Greenhouses/Cedar Hot Tubs Australia	931	Ninth Ave
Switch AG	321	Third Ave
Tas Daffodils	1034	Tenth Ave
Terra-Preta Developments	115	First Ave
The Lost Seed / Annsleigh Gardens	N74B	North Street
Tiltec Australia	834	Eighth Ave
Totally Rusty	1030	Tenth Ave
Van Diemen Quality Bulbs	1029	Tenth Ave
Winter Gardenz Pty Ltd	932	Ninth Ave

LEISURE

23ZERO	S56	South Street
Anywhere Social Goods	113A	First Ave

Auntie's Quaint Quilts	C15	Pavilion C
Bedrock Liners	N49	North Street
Better Living Australia	M02	Main Street
BIG4 Low Head Tourist Park	S10-2	South Street
Caravans Tasmania	S17	South Street
Coastal Caravans	S12	South Street
Cohuna Sports Store	M126	Main Street
Drifta Stockton Tasmania	S29	South Street
Evakool	440	Fourth Ave
Fire and Light Artisan Blacksmith	920A	Ninth Ave
Fit & Cut Co	S06-2A	South Street
Get Hitched Tasmania	734	Seventh Ave
Islander Campers	114	First Ave
Jayco Hobart	S24	South Street
Just Spas Launceston	CWA6	CWA Grove
Little Things Farm	1126	Eleventh Ave
MW Toolbox	CWA7	CWA Grove
Off-Grid Caravans Tasmania	603	Sixth Ave
Possum Pouch	204	Second Ave
Ropes Plus	S73	South Street
Scouts Tasmania - Adventurous Activities	N73	North Street
Shannons Insurance Pty Ltd	N72	North Street
Shockloc	S13	South Street
Snowy River Launceston	S30	South Street
Stoked	CWA19	CWA Grove
Tailgate Campers	732	Seventh Ave
Tasmania JackJumpers	458	Fourth Ave
Tassie RV Solutions	S15	South Street
Tiva Heater	S23	South Street
Tough Dog Suspension	N62	North Street
Trayon Campers	546	Fifth Ave
Weighforward Mobile Caravan and Vehicle Weighing	S54	South Street
Zippi Electric Bikes	N68	North Street

LIVESTOCK

4Sight	M96	Main Street
ABS Australia	M96	Main Street
Allflex - Coopers Animal Health	M96	Main Street
Apiam Animal Health	M96	Main Street
Arrowquip	512	Fifth Ave
Asset Nutrition	1134	Eleventh Ave
Axis Industries Pty Ltd	1128A	Eleventh Ave
Castlegate James Australasia	M96	Main Street
Chemvet Australia	N94	North Street
Custom kennels	930	Ninth Ave
DairyTas	M96	Main Street
Datamars Livestock	M05A	Main Street
Farmbot Monitoring Solutions	NN21B	North-North Street
Genesis Industries Aust Pty Ltd	M03B	Main Street
Genetics Australia	1124	Eleventh Ave
Grating Tasmania	1133	Eleventh Ave
Hygain & Mitavite	N100	North Street
Imperial Horse Floats Tasmania	1136B	Eleventh Ave

Iron Horse Equine Nutrition Pty Ltd	1132	Eleventh Ave
Kelpies In Action	N88	North Street
MaxCare	M96	Main Street
Mobble	222	Second Ave
Offsider Agricultural Equipment	NN25	North-North Street
Old Cobran Pastoral P/L	1129	Eleventh Ave
Our Patch Pet Food	1131	Eleventh Ave
Pony Club Tasmania	1130	Eleventh Ave
Ridley Agri Products	M96	Main Street
Rocky Cape Company/Mountain Engineering	147	First Ave
Stockpro	327	Third Ave
Tas Rural Supplies	153	First Ave
Tasmanian Stockfeed Services	M96	Main Street
TB Shearing Supplies PTY LTD	M14	Main Street
Te Pari Products Ltd	224	Second Ave
Terragen Probiotics	M96	Main Street
Willowdale Rural	454	Fourth Ave
World Wide Sire/ Cow Manger	M96	Main Street

MARINE AND SAFETY

Baily Marine	M70	Main Street
Captain Marine	M64	Main Street
Channel Marine	702	Seventh Ave
Coastal Marine	703	Seventh Ave
Deegan Marine	708	Seventh Ave
Defibrillators Tasmania	S61	South Street
Lewis Marine	711	Seventh Ave
Marine & Safety Tasmania	M66	Main Street
Reel Game Boats and Trailers	S69	South Street
RL Welding	701	Seventh Ave
Tasmania Marine Centre	712	Seventh Ave
The Fisherman's Shed	S63	South Street
The Fishing Hub	715	Seventh Ave

OTHER

AC3D	S10-1	South Street
ActivAcre	809	Eighth Ave
Adoreu Baby and Kids	F01	Pavilion F
Aurora Dairies Pty Ltd	M96	Main Street
Australian Deer Association	S10-3	South Street
Best Farming Systems	207	Second Ave
Bio Natural Solutions	1121A	Eleventh Ave
Bonorong Wildlife Sanctuary	514	Fifth Ave
Bunyip Water Pumps	103	First Ave
Charlies Pupcakes	CM13	Outside Craft
Coastal Containers Tasmania	S07	South Street
Create&Wonder	B11	Pavilion B
DairyDreamers	1122	Eleventh Ave
Dogs' Homes of Tasmania	N80	North Street
EROS. Pet Treats	S06-2B	South Street
Every Battery Pty Ltd	NN14	North-North Street
Fluidline North	250	Second Ave
Flying Colours Group	905	Ninth Ave

Graymont Australia	1125	Eleventh Ave
HE Silos	349	Third Ave
Island Kelpies	M107	Main Street
jjawpetteats	1128B	Eleventh Ave
Lactalis Mainland Dairy	M96	Main Street
Lady In Lead	A03	Pavilion A
Landcare Tasmania Inc.	M110	Main Street
Levno	M96	Main Street
Livestock Improvement P/L	M96	Main Street
Members Tasmania	544	Fifth Ave
National Breast Cancer Foundation	F04	Pavilion F
Netco Pumps	S81	South Street
Offbeat Tassie Artist	CM15	Outside Craft
PIGMENT Monica Reeve	B03	Pavilion B
Planet Macadamia	924	Ninth Ave
Rapid Hardware Group	821	Eighth Ave
Rawleighsdownunder	M128	Main Street
Rebound Books	A15	Pavilion A
Red Hot Tips	809	Eighth Ave
Salters Hire Tasmania	M85	Main Street
Saputo Dairy Australia Pty Ltd	M96	Main Street
SelfHelp Workplace	S64-4	South Street
Sprout Tasmania	807	Eighth Ave
Supagas	818	Eighth Ave
Tas Hydraulics Pty Ltd / Enzed North West & Launceston	341	Third Ave
Tasmanian Dairy Industry Authority	M96	Main Street
Tasmanian Institute of Agriculture	S70	South Street
Tasmanian Irrigation	809	Eighth Ave
Taubmans	821	Eighth Ave
Tefco Piping Systems	348	Third Ave
The Fudge Factory	920B	Ninth Ave
Timeless Toys	M118	Main Street
Toffeemont Alpacas	M117A	Main Street
Tough Soaps	720A	Seventh Ave
Toyota Material Handling Australia	342	Third Ave
Toyota Motor Corporation Australia	542	Fifth Ave
Tradigital With Liz	B09	Pavilion B
Turnerix Tasmania	618B	Sixth Ave
Unique Charters	S04	South Street
Vital Glow Development Australia	CWA10	CWA Grove
Wiggies Custom Cuts	915	Ninth Ave

SERVICE PROVIDER

ABA Feed & Change Parenting Facility	914	Ninth Ave
ADF Careers	448	Fourth Ave
Agworld	E02	Pavilion E
Ambulance Tasmania	S82	South Street
Angas Securities Limited	CWA5	CWA Grove
ANZ Banking Group	506	Fifth Ave
Audika Hearing Clinic	F10	Pavilion F
Aurora Energy	S75	South Street
Australian Border Force	802	Eighth Ave

Australian Labor	907	Ninth Ave
Australian Red Cross Lifeblood	S64-1	South Street
Baptcare NDIA PITC	F06	Pavilion F
Bentleys Tasmania	CWA27	CWA Grove
Beyond Blue	801	Eighth Ave
Bloom Hearing Specialist	S60-2	South Street
Bureau of Meteorology	M92	Main Street
carbonFAIR	928	Ninth Ave
CareSuper	F08	Pavilion F
Cornerstone Youth Services & Headspace	616	Sixth Ave
Dairy Australia	M96	Main Street
DonateLife Tasmania	S60-4	South Street
Fair Work Ombudsman	S60-3B	South Street
Farm Focus	809	Eighth Ave
Farmsafe Australia Inc	809	Eighth Ave
Girl Guides Tasmania McIntyre Region	516	Fifth Ave
Heart Foundation	917	Ninth Ave
Housing Industry Association	M16	Main Street
Hydro Tasmania	S66	South Street
KPMG	E04	Pavilion E
Life Without Barriers	S64-2	South Street
Lime Finance	M10	Main Street
Lions Tasmania	S60-3A	South Street
Maxxia	E06	Pavilion E
MCMF	F05	Pavilion F
Medibank	816	Eighth Ave
Mission Australia NDIS PITC	F06	Pavilion F
National Australia Bank	244	Second Ave
National Heavy Vehicle Regulator	129	First Ave
Natural Resources and Environment Tasmania (prev. DPIPWE)	S70	South Street
NRM North	S70	South Street
OneCare	E10	Pavilion E
Pharmacy Guild of Australia - Tasmania Branch	S59A	South Street
Primary Employers Tasmania	807	Eighth Ave
Rabobank	614	Sixth Ave
Recycle Rewards	E03	Pavilion E
Red Hot Tips	808	Eighth Ave

Regional Development Australia - Tasmania	807	Eighth Ave
Regional Tech Hub	809	Eighth Ave
Rex James Stockfeed Pty Ltd	M96	Main Street
RIC (Regional Investment Corporation)	809	Eighth Ave
Riordan Group	NN32A	North-North Street
Royal Flying Doctor Service Tasmania	529	Fifth Ave
Rural Alive & Well (RAW)	M88	Main Street
Rural Business Tasmania	807	Eighth Ave
Rural Youth Tasmania	M88	Main Street
Services Australia	807	Eighth Ave
Shooters Fishers & Farmers Party (TAS)	S06-3B	South Street
Specsavers	814	Eighth Ave
St Lukes	612	Sixth Ave
TAPG	807	Eighth Ave
TasFarmers	809	Eighth Ave
Tasmania Fire Service	S78	South Street
Tasmania Police Community Engagement	S79	South Street
Tasmanian Automotive Chamber of Commerce	548	Fifth Ave
Tasmanian Government Exhibit	S74	South Street
Tasmanian Liberal Party	1026	Tenth Ave
TasNetworks	M43	Main Street
TasWater	E09	Pavilion E
Wellways Australia	720B	Seventh Ave
WFI Insurance	E01	Pavilion E
Women's Health Tasmania	S64-3A	South Street

Please leave a gift in your Will to Guide Dogs Tasmania

To find out more, please get in touch
 (03) 6232 1222
giftsinwills@guidedogstas.com.au
guidedogstas.com.au



ROAD SAFETY ADVISORY COUNCIL TOWARDS ZERO



Over three days, over 50,000 people are expected to visit Agfest, one of Tasmania’s most popular annual events. For every visitor, this journey will include at least some travel on a rural road.

Rural roads connect our communities and keep Tasmania moving. Of the state’s 18,500-kilometre road network, around 80 per cent is classified as rural, stretching well beyond our towns and cities.

For most Tasmanians, driving on rural roads is part of everyday life. Yet these familiar roads account for around two thirds of fatal and serious crashes, with speed often a contributing factor.

Rural roads present a different set of risks compared to driving in towns and cities, which is why awareness

matters. They are often narrow and winding and conditions can change quickly, from wet surfaces and fading light to wildlife or unfamiliar stretches of road. Recognising these risks allows drivers to make small but important adjustments behind the wheel, such as easing off the accelerator, increasing following distance and driving to the conditions.

Slowing down and driving to the conditions, not just the posted speed limit, can make a real difference. On high-speed rural roads, even small reductions in speed can greatly reduce the risk of death or serious injury.

There is also important work happening across the network. The Tasmanian Government is investing more than \$30 million to improve

rural road safety, including sealing shoulders, improving line marking and signage, and removing roadside hazards.

Last year saw too many lives lost on our roads, and this year has not started well. Road safety is based on the Safe System approach, which recognises that people make mistakes and aims to ensure those mistakes do not result in death or serious injury. But it also relies on all road users playing their part.

Allow extra time so you are not tempted to rush. Take regular breaks on longer trips and slow down on unfamiliar or winding roads and through small towns. Watch for wildlife, especially early in the morning and evening and be patient with other road users.

Small choices behind the wheel can have lifelong consequences. Drive to the conditions and help ensure everyone gets to their destination safely.

Scott Tilyard

Chair, Road Safety Advisory Council

**COME SEE US AT
THE BISON SHED!**

📍 N08

DIRECT SEEDING
Specialists in zero-till seeding since 1994

Site NN21A

www.directseeding.com.au

MEET THE SCOUTS BINFLUENCERS RECYCLING MADE EASY AT AGFEST!



Keep an eye out for Scouts Tasmania's "Binfluencers" as you explore Agfest this year! These friendly volunteers are here to help visitors put the right things in the right bins, making it easier for everyone to recycle correctly and reduce waste across the event.

Binfluencers will be guiding patrons on waste sorting and collecting eligible 10c refund containers through the Recycle Rewards scheme. Every container collected helps Scouts fundraise for their Groups — supporting camping gear, outdoor activities and the adventures that make Scouting so memorable.

This initiative is about more than recycling. Scouts are volunteering alongside their families, learning the value of community service and environmental responsibility in a real-world setting. By helping improve waste outcomes at Agfest,



they are playing an important role in keeping the event clean, safe and environmentally sustainable.

If you're unsure which bin to use, just ask a Scout — they'll be happy to help. And if you have an empty 10c refundable drink container, pop it in

a Scout bin and support their next adventure!

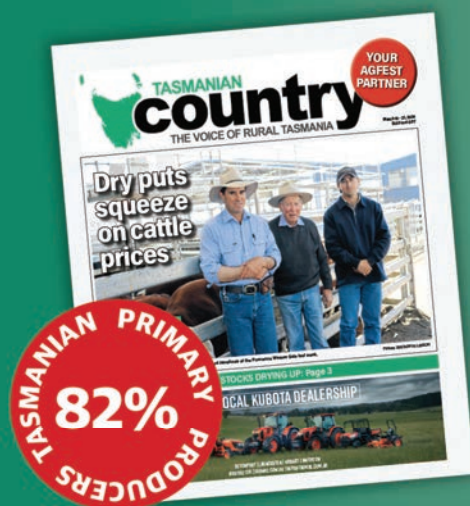
Feedback? We'd love to hear from you — recycling@tas.scouts.com.au

Need to reach farmers?

Tasmanian Country is our state's second-largest newspaper by audience. **Over 82%** of our readership is delivered directly to primary producers' mailboxes every Friday.

That's **over 33,000 farmers** every week, in Tasmania's **only statewide publication**.

If you want to reach rural Tasmania, contact James today: **0449 178 715** or james.young@fontpublishing.com.au





GET READY TO TANTALIZE YOUR TASTE BUDS AND FUEL UP IN STYLE!

Our five Quercus Taste sites are packed with an exciting spread of mouthwatering food and drinks that are sure to wow you.

Quercus Taste 1 is conveniently located On North street! Grab a pizza, coffee, fries or burger and enjoy a moment to relax or go for a stroll to admire some of the new machinery on offer this year. Taste 1 is your go-to destination for a day of indulgence, discovery, and pure fun!

Quercus Taste 2: is located between 1st and 2nd Avenue. Sweet, savoury or spicy - Its there! Think kebabs, Donuts, smoked meats and Ice Cream!

Welcome to Quercus Taste 3 The Ultimate Flavour and Fun Destination! Prepare yourself for the largest stop at Quercus Taste – Taste 3, located next to Tas Petroleum Central Arena, so sit back and enjoy some entertainment while you enjoy the flavours on offer! This vibrant hub is home to a jaw-dropping mix of gourmet food and top-tier alcohol exhibitors, making it the perfect place to sip, savour, and soak in the atmosphere.

Craving something sweet? Bite into delicious waffles that are sure to make your taste buds swoon. Or grab a slice of heaven from Red Grasshopper Pizza for a crispy, cheesy delight. If you're after something a bit more gourmet, treat yourself to a selection of mouthwatering oysters from Bruny Island Oysters, or indulge in the

hearty, rich flavours of Smoked by Lost Captain's smoked meats.

But that's just the start! This site is also the go-to place for all things alcoholic. Sip on refreshing brews from Stuckies Brewing Co., enjoy the unique flavours of Southern Wild Distillers, or raise a glass to the legendary taste of Little Rivers Brewing Co. Whether you're a craft beer lover, a cocktail aficionado, or a fan of premium spirits, Quercus Taste 3 has it all!

So come hungry, come thirsty, and get ready for a flavour-packed experience that combines the best of food and drink, all in one unbeatable location.

Quercus Taste 4 is your ultimate foodie escape! This convenient location is packed with mouthwatering delights and deliciously unique offerings that will have you coming back for more.

Craving fresh, farm-to-table goodness? Paddock to Pete has you covered with their locally sourced, flavour-packed produce. If you've got a sweet tooth, Strawberry Delight will satisfy every craving with their fresh and totally irresistible ice creams that are worth every bite. Looking for something simply divine? Tas Gourmet Seafood brings you fresh seafood goodness that is sure to make your day.

For all the BBQ lovers out there, Joshy's BBQ serves up smoky, tender, and juicy meats that are perfect for satisfying your cravings. And don't

forget to swing by Ceylon Cuisine for hearty, home-style meals that hit the spot every time.

Whether you're grabbing a quick bite or settling in for a leisurely meal, Quercus Taste 4 offers a tasty retreat that you won't want to miss. So come on down, discover these hidden gems, and treat yourself to a food experience you'll never forget!

Get ready to discover the newest culinary hotspot at Quercus Taste 5! Nestled between the Business and Lifestyle Expo and the ever-popular Tasweld Pavilion, this cozy yet vibrant location is packed with mouthwatering delights, bursting with delicious flavours and exciting food offerings.

Craving some Thai cuisine? Saya's brings the authentic Thai goodness you know and love, delivering crispy, flavourful perfection with every bite. Need a pick-me-up? Bloom Coffee has got you covered with rich, aromatic brews that will fuel your day and keep you coming back for more.

But that's just the beginning – **Quercus Taste 5** is packed with all kinds of mouthwatering surprises! So swing by, explore the newest food paradise, and enjoy all the tasty treats Quercus Taste 5 has to offer! It's the perfect place to refuel, relax, and enjoy a vibrant new dining experience.

QUERCUS TASTE

<<<< FIRST AVENUE >>>>

>>>> SECOND AVENUE <<<<

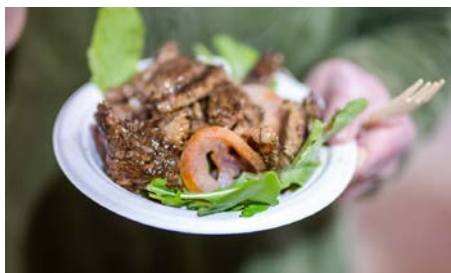
B'S LITTLE BAKEHOUSE 110-11	ROBBIE'S WOODFIRED PIZZAS 110-13	THE FIZZY FIX 110-15	THE LOADED CARVERY 110-16	RAST AUTHENTIC KITCHEN 110-18	HALLS BBQ 110-19
QUERCUS TASTE 1					
DONUT 7 110-1	STOOD'S MOBILE CATERING 110-2	BABA'S KEBABS 110-4	DIPPED 110-6	TASSIE SWEET & SAVOURY STIX 110-7	CHILLIN DORY 110-9

<<<< THIRD AVENUE >>>>

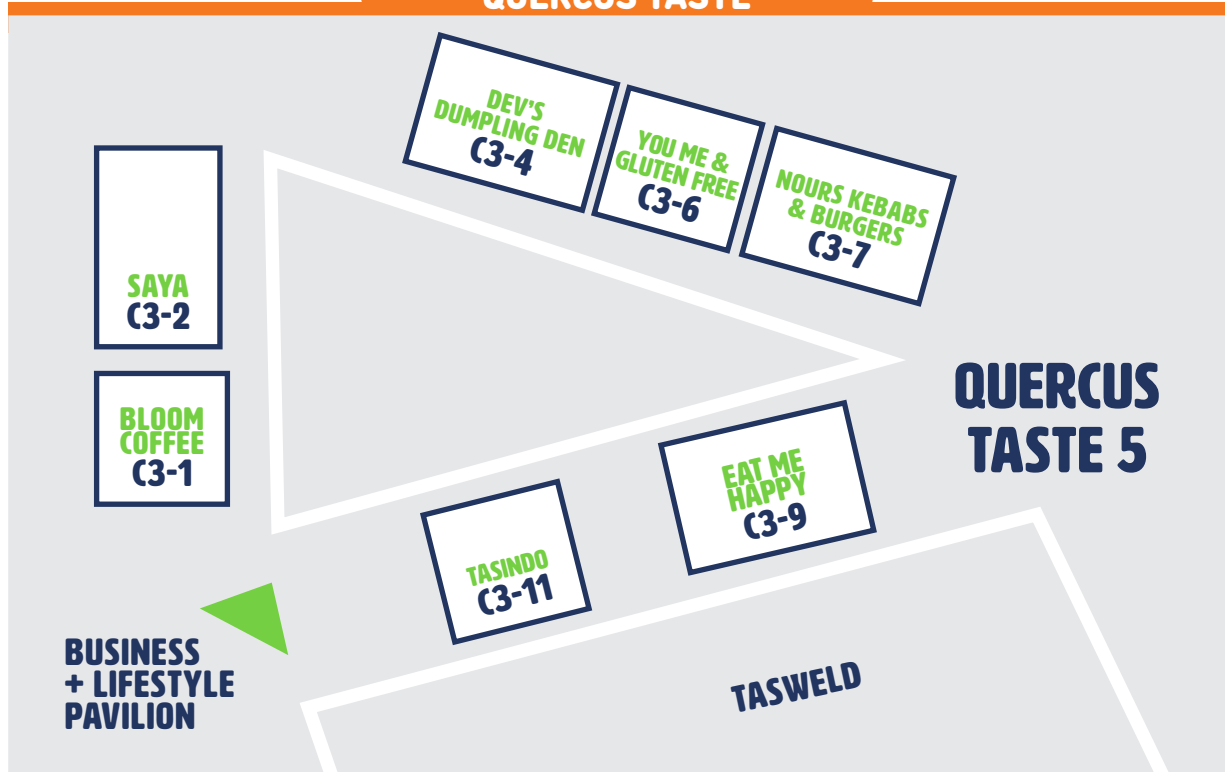
>>>> FOURTH AVENUE <<<<

FOOD OF HIMALAYAS N27-1	GAUNT'S FARM N27-2	GAUNT'S FARM (COFFEE) N27-2	FRANKLY DIVINE N27-4	DEVIL'S DESSERTS N27-6	THE SAILOR FOOD TRUCK N27-8	PINK BUNS N27-10	JIM'S LEBANESE KEBABS N27-10
QUERCUS TASTE 2							


<<<< NORTH STREET >>>>




QUERCUS TASTE



adaptaliftGROUP
Powering Australian Agriculture Forward




Visit us at stand **NN11**



See Our Full Range Here
13 22 54 | adaptalift.com.au

Find your home in the Country.



Advertisers in **Tasmanian Country's** Real Estate section enjoy editorial coverage of their property listings. Enquire below:

James Young: **0449 178 715** or **james.young@fontpublishing.com.au**

Try advertising that readers trust.

Local newspapers are the most trusted source of news and advertising in Australia.

Over 60% of respondents trust local newspapers more than any other media channel, including of radio, TV, social media, and metropolitan newspapers.

Sources: ACM Heartbeat of Australia, 2022 and News Fundamentals, ThinkNews-Brands, 2022

To discuss how we can help you reach these trusted audiences across Tasmania, please contact **James Young** on **0449 178 715** or **james.young@fontpublishing.com.au**

font
publishing

GET THE APP GET THE CAP



1. Download on your app store
2. Subscribe to receive notifications
3. Show us at the TC tent (Main St / CWA Grove)
4. Get your cap on!



 **1800 729 827**

ruralaliveandwell.com.au/callbackrequest

Rural life throws up many challenges and we recognise that navigating those ongoing challenges can become tiresome.

Our team are passionate about building thriving and sustainable communities. To achieve that, we first have to make sure our people are healthy.

It's not easy to reach out for support, but we have tried to make it simple. Call directly or submit a call back request



AGFEST COMMITTEE

THE TEAM OF PEOPLE WHO MAKE THIS EVENT HAPPEN !

Jesse Macdonald

Chair

Sam Tolman

Vice Chair incl. Community Groups

Caine Evans

Operations Manager

Sean Schofield

Exhibitor Manager

Ella Coad

Features Manager

Tom Knott

Security Manager

Hayden Richardson

Safety & Compliance Manager

Amber Bramich

State President - Rural Youth Feature

James Viney

Non Voting RY Member

Assistant Operations incl Fuel

Holly Coad

Assistant Exhibitor incl B&L and Craft

Sam Pini

Assistant Features incl Central Arena

Mitchell Beer

Assistant Security

Lily Jones

Personnel & Accommodation Coordinator

Lillian Shelton

Assistant Personnel & Accommodation

Ashley Evans

Committee Catering Coordinator

Caine Evans

Communication & Engagement Coordinator

Jessica Richards

Assistant Communication & Engagement incl PA

Kyler Evans

Assistant Waste Management

Callum Forbes

Traffic Management Coordinator

Brooke Jones

Assistant Traffic (inc Signs)

Sarah Young

Quercus Tastes Coordinator

Ashtyn Willey

Assistant Quercus Tastes

Lara Woodberry

Assistant Quercus Tastes

Georgie Brown

Equine Entertainment Coordinator

Jessica Elphinstone

Assistant Equine Entertainment

Cheyene Turner

4WD & Heritage Coordinator

Vanessa Hansson

Assistant 4WD & Heritage

Maggie Ebdon

Livestock & Animal Handling Coordinator

Abbey Easton

Assistant Livestock & Animal Handling

Fern Kemp

Ticket Box Coordinator

Samantha Elphinstone

Assistant Ticket Box

Patrick Correy

Assistant Ticket Box

Jye Earnshaw

Purchasing Coordinator

Matthew Wadley

Car Parks Coordinator

Robbie Duggan

Power Coordinator

Cameron Tate

Assistant Power

Zeth Cartledge

Loading & Lifting Coordinator

Mitchell Green

Assistant Loading & Lifting

Adam Condric

Water Cart Coordinator

Kai Calderon

Assistant Water Cart

Jessica Richards

Learning Trail Coordinator

VISITOR INFORMATION

LOOKING FOR FACILITIES? HERE'S WHERE TO FIND THEM



TOILETS

There are four permanent toilet blocks, one at each corner of the static site. (Located at the end of South Street and CWA Grove, each end of Eighth Avenue and First Avenue next to Bison Shed).



BABY FEED+CHANGE

Volunteers of the Australian Breastfeeding Association provide parenting facilities on Ninth Avenue at site 914 next to the Rural Youth Feature Tent.



FIRST AID

St John Ambulance is located on Site 613 in Sixth Avenue.



ACCESSIBLE TOILETS

Accessible toilets are located on South Street near Sports Hut Pavilion.



LOST CHILDREN

Guides Tasmania care for lost children on Fifth Avenue at Site 516A under the crane.



INFORMATION BOOTHS

Two locations – one in the hexagonal building at the main entrance and the second at the Site Office in Main Street in front of Central Arena.

CHILDREN ID BRACELETS

Collect a free ID bracelet for your child at the entrance gates. Write your child's name and your mobile number and secure it on your child's arm. This makes it easy for us to ring you with good news if you are separated.



**AGFEST IS A
SMOKE-FREE
PUBLIC EVENT**



**NO PETS
ALLOWED**
EXCEPT FOR TRAINED
SERVICE ANIMALS



**GATES OPEN
8AM - 4PM**



**FOR ON-SITE
ASSISTANCE**

(03) 6397 3038

**IN THE EVENT OF AN
EMERGENCY
DIAL 000**



Did you get your TC Cap?

Get the paper in your pocket with the **TasCountry App** and get your hands on a limited-edition TC cap.



Corner of Main Street and CWA Grove.

YOUR NEW HOMEPAGE FOR REGIONAL TASMANIAN NEWS



www.tasmaniancountry.com

DRIVING TO AGFEST

WHAT YOU NEED TO KNOW BEFORE DRIVING TO AGFEST

DURING AGFEST, SPECIAL TRAFFIC CONDITIONS WILL BE IMPLEMENTED IN OAKS ROAD AND BASS HIGHWAY TO ENABLE THE SAFE AND EFFICIENT MOVEMENT OF TRAFFIC IN AND OUT OF THE AGFEST SITE.

This will include reduced speed limits and the placement of barriers along the full length of Oaks Road to prevent lane changing (under request by Tasmania Police).

Patrons are asked to obey all signage and any directions given by traffic

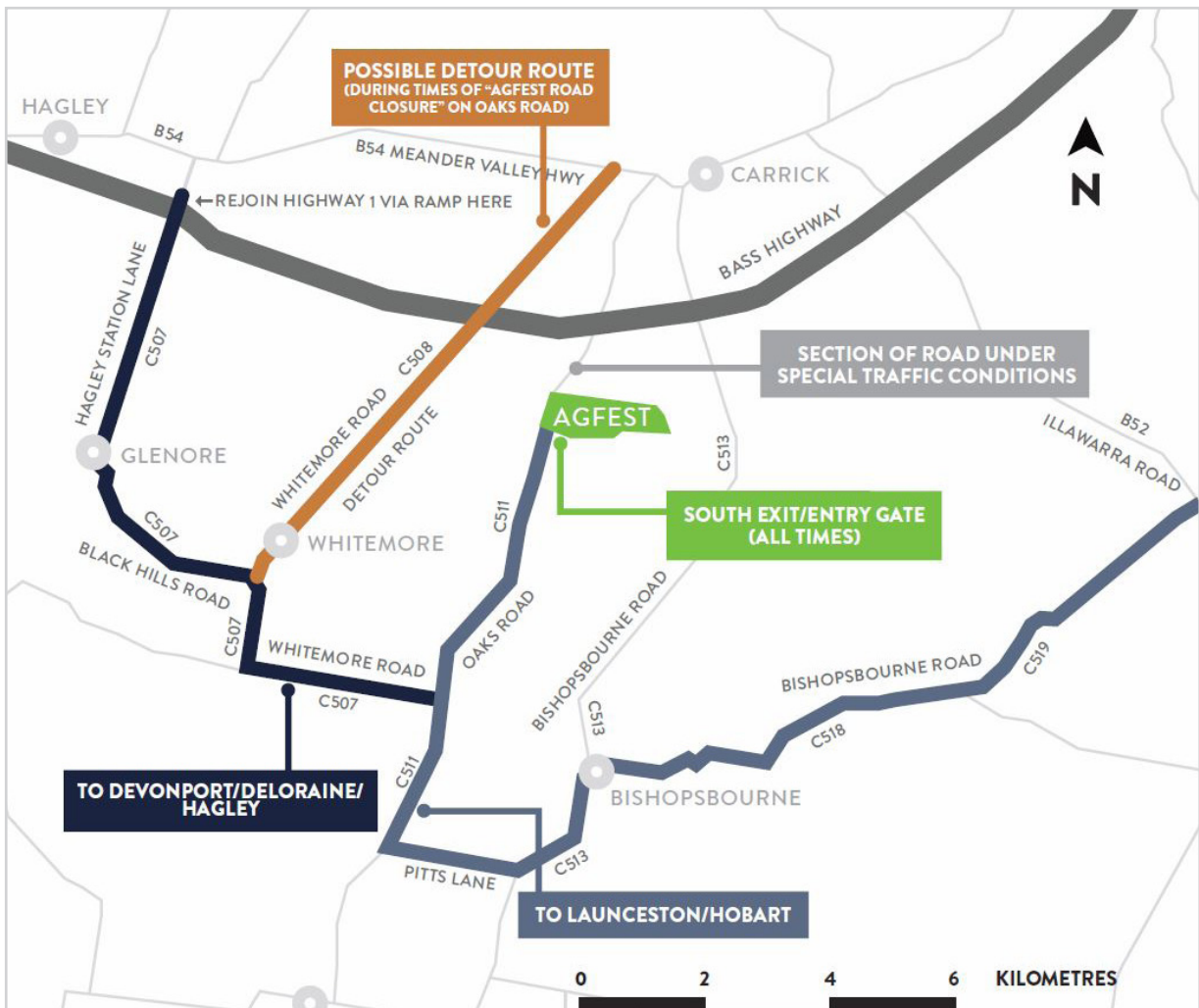
control officials and Tasmania Police. Traffic conditions may be altered at short notice to minimise delays.

Due to the special traffic conditions in place, patrons are encouraged to plan their Agfest routes before they leave home, especially if visiting from

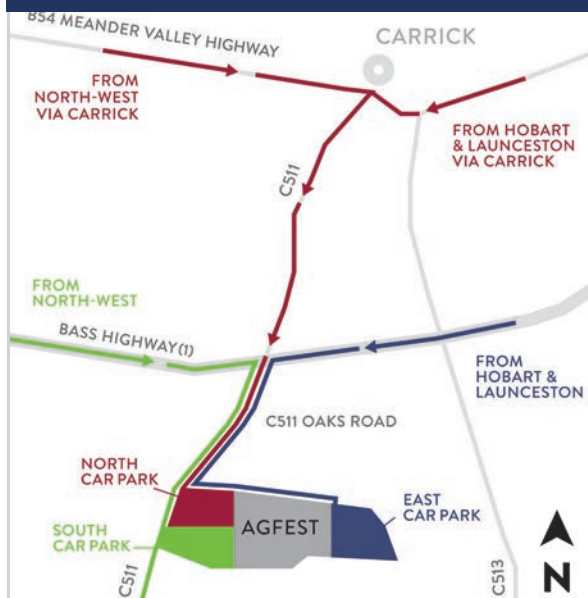
the North-West Coast and staying in Launceston overnight.

Refer to the Special Traffic Conditions map below for further details.

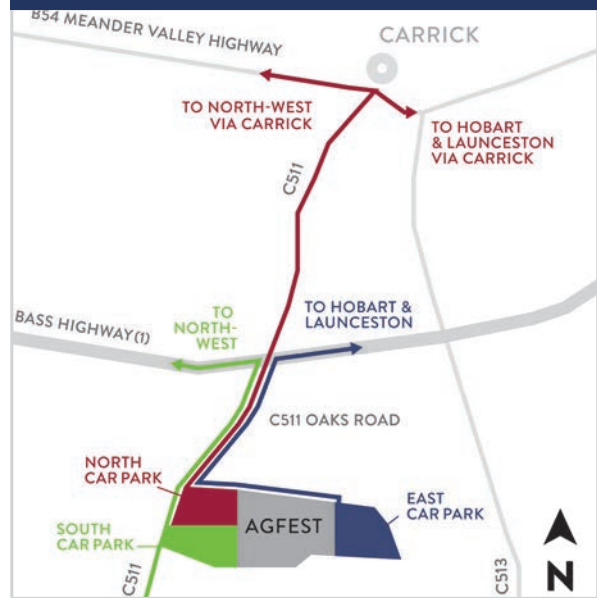
SPECIAL CONDITIONS TRAFFIC MAP



ARRIVING AT AGFEST



LEAVING AGFEST



BEFORE 2PM

FROM LAUNCESTON: Head towards Devonport on Bass Highway (1) and 22km from Launceston turn onto Oaks Road (C511) at the Liffey Falls exit.

FROM DEVONPORT: Head towards Launceston on Bass Highway (1). Approx. 7km past the Hagley bypass turn right onto Oaks Road (C511) at the Liffey Falls exit.

FROM HOBART: Follow the Midland Highway (1) to Perth, turn left onto B52, continue for 13km and turn onto Bass Highway (1). Continue approximately 4km and turn left onto Oaks Road (C511) at the Liffey Falls exit. The Liffey Falls exit on the Bass Highway is marked with large yellow Agfest directional signage.

AFTER 2PM

During the hours from 2pm until 6pm, Agfest cannot be accessed from the Bass Highway due to both lanes of Oaks Road being used for outbound exiting traffic only. If you plan to Agfest after 2pm please follow these alternative routes:

FROM LAUNCESTON: Head towards Longford. Just past Longford, follow (C518), (C513) and (C511) through Bishopsbourne.

FROM DEVONPORT: Head towards Launceston on the Bass Highway (1). Before reaching Hagley, turn onto (B54), travel through Hagley and Whitmore using (B54), (C507) and (C511).

FROM HOBART: Follow the Midland Highway (1) to Longford. Just past Longford, follow (C518), (C513) and (C511) through Bishopsbourne.

The routes via Hagley, Whitmore and Bishopsbourne are marked with Agfest directional signage.

BETWEEN 7.30AM AND 12PM

Exit via South Exit Gate only

BETWEEN 12PM AND 2PM

Exit via Oaks Road

BETWEEN 2PM AND 6PM

Exit must be made in the same direction you arrived. For example, if you came to Agfest from the North-West, then the route out of Agfest will lead back to the North-West.

If in doubt, signage in and around the car parks will guide you to the respective routes out of the Agfest site.

FROM HOBART

Follow the Midland Highway (1) to Longford. Just past Longford, follow (C518), (C513) and (C511) through Bishopsbourne.

The routes via Hagley, Whitmore and Bishopsbourne are marked with Agfest directional signage.



OUR SPONSORS

THESE BUSINESSES HAVE JOINED AGFEST AS EVENT SPONSORS AND WE ARE GRATEFUL FOR THEIR SUPPORT

DIAMOND



MIDLAND TRACTORS



Tasweld

GREAT ADVICE • GREAT PRICE • GREAT RANGE



SPORTS HUT



PLATINUM



Australian Chainsaw Products
3 Connector Park Drive, Kings Meadows, TAS, 7249
PH: (03) 6343 0404



GOLD



DIFFERENT. BETTER. GUARANTEED.



GOLD

POLARIS



Heavy Equipment



ROAD SAFETY ADVISORY COUNCIL
TOWARDS ZERO



Greyhounds *as Pets*
Tasmania

Proudly operated by
Tasracing



Sheffield Lamb Bar



SUPAGAS
YES WE CAN!



SILVER

OUR SPONSORS

MEDIA PARTNERS



SUPPORTERS



Official guide designed by Zest.
(03) 6334 3319 • ZESTTAS.COM.AU

The information in this program, as supplied by Rural Youth, was correct at the time of going to print. Program details may be subject to change. Refer to the notice board at the Site Office in Main St.

FRIENDSHIPS, FUN AND HAVING A GO!



READY FOR SOMETHING MORE?

If you're aged 15–30, Rural Youth offers hands-on experiences, leadership opportunities, and a social life like no other. From local events to helping run Agfest – there's something for everyone.

JOIN TODAY AND BE PART OF THE ACTION!



RURALLYOUTH.COM.AU

@Rural YouthTAS

P: 6331 6154

Your Country. 100% Tasmanian.

COME SAY G'DAY: Corner of Main St & CWA Grove

GET THE APP GET THE CAP

Get the paper in your pocket on the **TasCountry App** with notifications, and receive the best hat in the paddock



ALREADY GOT THE CAP?

App subscribers can get their hands on a limited edition TC stubby holder - while stocks last!